

2020

# NORTHWEST MINNESOTA

VISITOR & RECREATION GUIDE



**NORTHWEST**  
REGIONAL DEVELOPMENT COMMISSION

109 South Minnesota Street  
Warren, MN 56762

(218) 745-6733

[www.nwrdc.org](http://www.nwrdc.org)

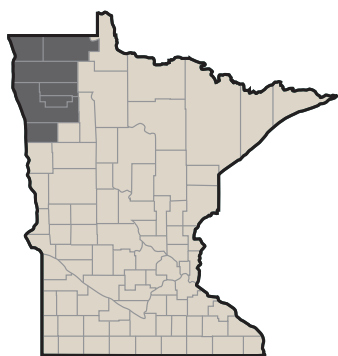
## TABLE OF CONTENTS

Major Parks .....	1
City Parks.....	6
Camping & Resorts .....	14
Motels & Bed n' Breakfasts .....	20
Multi-Purpose Trails .....	23
<b>Area Attractions</b>	
Golf Courses.....	29
Swimming Pools.....	30
Bowling.....	30
Movie Theatres .....	30
Tours.....	31
Special Attractions .....	32
Museums & Historical Areas .....	37
Outfitters / Bait Shops .....	40
Libraries .....	41
Restaurants .....	42
City & Regional Tourist Information .....	51

\*Listed alphabetically by city

### Minnesota counties covered in this guide:

Kittson  
Roseau  
Marshall  
Polk  
Pennington  
Red Lake  
Norman



Northwest Minnesota offers opportunities to find quiet wilderness, fun sporting events, exciting entertainment and the bright lights of regional trade centers within a reasonable travel distance. You can plan a weekend of relaxed camping in a small town setting and yet have access to some of the Midwest's best shopping areas.

Wildlife preserves with moose, deer and elk are only a few miles from the finest golf courses around. The natural terrain includes lakes, rivers, forest, prairie and everything in between. You can find crowds of people in the more popular spots but there are also places where peaceful solitude is the only description.

### To view this guide online go to:

[www.visitnwminnesota.com](http://www.visitnwminnesota.com)

The COVID-19 Virus (Coronavirus) pandemic has been the subject of concern for a period of several months in 2020. The NWRDC publishes the Tourism Guide as an annual service to our residents and visitors, but we remind the public to be aware and mindful of Governor's Executive Orders, as well as State and Local regulations and warnings regarding actions to be taken during the pandemic. We remind readers of this guide that health concerns of the public must be paramount and that travel and visitation restrictions mandated by the State of Minnesota should be heeded.

### SEND NEW LISTINGS OR CHANGES TO:

Northwest Regional Development Commission  
109 South Minnesota Street  
Warren, MN 56762

(218) 745-6733

# Major Parks

## Argyle

### State and County Parks

#### Old Mill State Park

33489 240th Ave. NW

17 mi. NE of Warren, or 13 miles E of Argyle or 11 miles W of Newfolden on County Road 4.

<http://www.dnr.state.mn.us/>

\* State Park fees

Modern camping with showers, flush toilets, 10 electric & water hookups, primitive camping, and 1 group campsite.

Summer Nature Interpretation, enclosed picnic shelter, swimming, canoeing, fishing, volleyball, horseshoe pit, and playground. Historical sites include a flour grinding mill. Suspension bridges and Sliding Hill in the park.

Biking, 7 miles of cross-country skiing and hiking trails, Snowshoeing, and 3.5 Miles of groomed trails, warming house with electricity and fireplace. The park's trails run through prairie, wooded river valley and pine areas.

## Crookston

### Game Refuges

#### Glacial Ridge National Wildlife Refuge

218-687-2229

10 miles east of Crookston on Hwy 2.

[www.nature.org](http://www.nature.org)

More than 24,000 acres. Established Oct. 12, 2004 as the 545th National Wildlife Refuge. The Nature Conservancy's largest prairie-wetland restoration project in U.S. history. Prairie chicken blinds available, please call for reservations. Habitat for moose, gray wolf, waterfowl, prairie chickens and other upland game birds, and a host of other prairie species.

### Wildlife Areas

#### Burnham Creek Wildlife Management Area

218-281-6063

<http://www.mnbirdtrail.com/hotspots/burnham.htm>

1,460 acres of prairies and a wetland impoundment. Large concentrations of sandhill cranes are likely in April. Area closed to the public during September and October (waterfowl refuge). Best times to visit are from April through August.

Pine to Prairie Birding Trail

#### Chicog Wildlife Management Area

218-281-6063

11 miles SE of Crookston on MN Hwy. 102 to Melvin; 1 mile S on township rd.

<http://www.dnr.state.mn.us/wmas/index.html>

1,624 acre example of some of Minnesota's remaining mesic prairie. Winter opportunities include exploration by snowshoe and cross-country skiing. Spring and fall brings migrating cranes.

#### Pankratz Memorial Prairie

218-498-2679

6 miles E of Crookston on Hwy. 2; 1.5 miles S on County Rd. 46; E on gravel rd. to parking lot.

[www.nature.org](http://www.nature.org)

2 units: 468 & 452 acres. A boulder can be seen that has been rubbed smooth by past buffalo herds.

#### Tympanuchus Wildlife Management Area

218-281-6063

3 miles E of Harold's Station on Co. Rd 45.

<http://www.dnr.state.mn.us/wmas/index.html>

This 840 acre WMA is open to public hunting, trapping & other compatible recreational uses. It is a remnant tall grass prairie with minor amounts of brush & trees. This area has some of the highest rare species diversity of any WMA.

## East Grand Forks

### City Parks/Picnic/Camping

#### The Greenway

701-787-3756

Along the Red River in Grand Forks and East Grand Forks

<http://www.greenwayggf.com/>

Consists of 2,200 acres lining the Red River & Red Lake River, flowing through Greater Grand Forks. This picturesque urban space offers countless recreational, cultural, historical & natural resource opportunities. You can hike, walk, inline skate, bike, cross-country ski, bird, canoe, fish, golf & much more in the heart of our two cities.

An asphalt trail system covers over 20 miles.

### State and County Parks

#### Red River State Recreation Area

866-857-2757

515 2nd St. NW

1 block north of Cabela's in East Grand Forks.

<http://www.dnr.state.mn.us/>

113 campsites, including 85 electric sites with full hookups, plus shower & bath facilities located next to downtown East Grand Forks. Electrical, sewer, and water hookups, dump station nearby, and flush toilets. Modern restrooms are open May - Sept.

This 1,200-acre state recreation area came about as a result of housing removal after the flood of 1997. Located near the area: groceries, ice, snacks, golf course, & laundry. Swimming pool, picnic area, playground, fishing, tackle, live bait, camping gear, gas, & boat ramp. Partially encompassed in the GF/EGF Greenway.

5 miles of paved hiking/biking trail & 2 mile cross country ski trail.

## Erskine

### Game Refuges

#### Rydell National Wildlife Refuge

218-687-2229

17788 349th St. SE

2.5 Miles W. of Erskine on Highway 2, 2.5 miles S. on Highway 210  
[Rydell@fws.gov](mailto:Rydell@fws.gov)

2,120 acre refuge established in 1992. Includes a visitor center with bookstore, wildlife observation and photography, hiking, snowshoeing, crosscountry skiing, fishing, hunting and environmental education.

7 miles of trails.



## Major Parks

### Fertile

#### State and County Parks

##### Agassiz Dunes

218-574-2622

1 mile south and 1 mile east of Fertile.

<http://www.dnr.state.mn.us/snas/index.html>

Preserved remnant of the sand dunes that northwest winds pushed up on the eastern beaches of glacial Lake Agassiz. Operated by the Nature Conservancy.

Hiking Trails allow a close view of the area.

##### Agassiz Environmental Learning Center

218-945-3129

400 W. Summit Ave.

<http://aelcfertile.org/>

Primitive camping with flush toilets and showers.

Picnic area and modern washrooms. Primitive Camping with flush toilets and showers. Ten miles of hiking and cross country ski trails along the Sand Hill River and through the Fertile Sand Hills.

Ten miles of hiking and cross country ski trails along the Sand Hill River and through the Fertile Sand Hills.

#### Wildlife Areas

##### Public Nature Areas

218-945-3136

400 W. Summit Ave.

Open to Public Touring. Over a dozen wildlife management areas within 15 miles of Fertile. Native prairies offer spectacular wildflower blooms from April to October. Courting displays of prairie chickens and sharptail grouse during April and May. Maps to natural areas available at Fertile Community Center.

### Fisher

#### Wildlife Areas

##### Malmberg Prairie

218-739-7576

300 St SW

Located 7 miles SW of Fisher MN

This prairie has never been cultivated. The same sod that absorbed the hoof print of the buffalo remains intact today with its native grasses. Travel South on Hwy 75; turn right on to County Road 9 going 8 miles West. Turn left at the intersection of County Road 56 and go 2 miles to reach the NW corner of the preserve.

### Gary

#### Wildlife Areas

##### Agassiz-Olson Wildlife Management Area

218-847-1579

5 Miles north on Hwy 32, 5 West CSAH 5.

<http://www.dnr.state.mn.us/wmas/index.html>

A major feature is a flood control structure that allows a 300-acre open-water wetland to form. Sandhill cranes have nested here and the pool supports waterfowl. Greater prairie-chickens have used open areas for booming grounds.

### Greenbush

#### Game Refuges

##### Twin Lake Wildlife Refuge

218-463-1557

12 miles West on Hwy 11.

\* Free

### Gully

#### Wildlife Areas

##### Gully Fen (SNA)

1.3 miles North of Gully on Co. Rd. 2

Includes calcareous seepage fens, tamarack & shrub seepage swamps, conifer & hardwood swamps, and rich fens. This location was previously threatened by development of rice paddies and logging. Two areas of note that occur in the upper reaches of the site include a 100 acre calcareous fen & a complex of tamarack with calcareous and rich fens. Birding & wildlife viewing.

### Karlstad

#### Wildlife Areas

##### Twin Lakes State Wildlife Management Area (WMA)

218-436-2427

Contact: DNR, Karlstad, MN

4 miles NE, SH 11.

<http://www.dnr.state.mn.us/wmas/index.html>

Camping is permitted at 7 signed sites.

8,200 Acres. Recreation includes hiking, snow shoeing, cross country skiing, berry picking, canoeing & wildlife viewing. Water access is available at several locations adjacent to the marshes. There is a viewing platform located off Hwy. 11 that is wheelchair accessible. Contains a 1,200 acre waterfowl sanctuary. No trespass or hunting is allowed in the sanctuary during Sept & Oct.

##### Wallace C Dayton Conservation & Wildlife Area

218-436-3455

<http://www.mnbirdtrail.com/hotspots/dayton.htm>

12,600 acres of aspen parkland habitat are preserved, & is an intact remnant of a vast dynamic landscape. Moose, elk, wolves & bear can be seen here. Best times to visit are from April-Oct.

Pine to Prairie Birding Trail





## Major Parks

### Lake Bronson

#### State and County Parks

**Lake Bronson State Park** 218-754-2200  
3793 230th St

<https://www.dnr.state.mn.us/>

3 campgrounds with 152 sites. 6 pull through sites, 67 with electricity. Campsite offers showers, flush toilets and dump station.

Lake Bronson State Park is connected to the Two Rivers and offers many outdoor activities including; swimming, boating, canoeing, hiking, fishing, mushroom hunting and camping. There are trails and a swimming beach. In winter, snowmobilers, cross country skiers and snowshoers enjoy the park's network of trails and through varying vegetation and terrain. The park has an observation tower that was built as a part of the WPA (War Powers Act).

#### Wildlife Areas

**Beaches Lake State Wildlife Management Area (WMA)** 218-436-2427

Just NE of Lake Bronson State Park.

<http://www.dnr.state.mn.us/wmas/index.html>

Seven camping sites are posted with camping permitted signs.

This WMA is one of the largest in the state (31,000 acres). Come see moose or listen to the wolves howl. Seven Camping sites are posted with camping permitted signs.

### Lancaster

#### Wildlife Areas

**Aspen Parkland Landscape** 218-436-2427

Contact: DNR, Karlstad, MN

Links with the Aspen Parkland Landscape in Manitoba. Ecological classification with various habitats. Kittson County is 50% in the Aspen Parkland Landscape and 50% in the Red River Prairie.

**Caribou State Wildlife Management Area (WMA)** 218-436-2427

Contact: DNR, Karlstad, MN

North of County Rd 4 on County 51.

<http://www.dnr.state.mn.us/wmas/index.html>

Three camping sites are posted with camping permitted signs.

Just under 14,000 acres. There have been sightings of Elk, Bear & Timber Wolves. An example of the Aspen Parkland Landscape in NW Minnesota. This WMA is open to public hunting, trapping, hiking, berry picking, and wildlife viewing. Three camping sites are posted with camping permitted signs.

**Joe River State Wildlife Management Area (WMA)** 218-379-3205

Contact: DNR, Karlstad MN

Approx. 15 miles NE of Lancaster, near Canadian border.

[dnrkarlstad@wiktel.com](mailto:dnrkarlstad@wiktel.com)

<http://www.dnr.state.mn.us/wmas/index.html>

160 acre marsh/grassland. Great place to view a variety of waterfowl, including Ruddy Ducks. Limited opportunities for waterfowl, Sharp-tailed grouse and Hungarian partridge hunting. Muskrat, mink, raccoon and fox offer some trapping.

### Skull Lake State Wildlife Management Area (WMA)

218-436-2427

Contact: DNR, Karlstad, MN

East of Lancaster off of County Rd 4.

<http://www.dnr.state.mn.us/wmas/index.html>

Primitive camping sites, free with first come, first serve availability. Camping areas are identified with "Camping Permitted" signs.

7,500 acres of unique topography, unique upland prairie. Elk, bear and timber wolves have been spotted in this region. Cross-country skiing opportunities available. This is the only WMA in Kittson County where blueberries have been found. Hunting opportunities for grouse and deer are excellent.

### Wilebski's Bird Sanctuary

218-762-4205

7 miles north on Hwy 59, 1 mile west

[www.wiktel.net/birdsanctuary](http://www.wiktel.net/birdsanctuary)

3 miles of birding trails.

### Mentor

#### Wildlife Areas

### Pembina Trail Scientific & Natural Area

218-498-2679

9 miles W of Mentor on Co. Rd 45.

<http://www.dnr.state.mn.us/snas/index.html>

2,360 acres on/near a prominent beach ridge at the eastern edge of Glacial Lake Agassiz. The site is associated with the Pembina trail, a major ox-cart route that traders used to haul furs and supplies between Winnipeg and St. Paul. Also see [www.nature.org](http://www.nature.org)

### Middle River

#### Game Refuges

### Agassiz National Wildlife Refuge

218-449-4115

Contact: Refuge Manager

22996 290th St. NE

From Thief River Falls go 12 miles North on MN Hwy 32, then 11 miles East on Marshall County Road 7 to Agassiz Headquarters.

[Agassiz@fws.gov](mailto:Agassiz@fws.gov)

<http://www.fws.gov/refuge/agassiz/>

\* See below

Primitive camping allowed in designated areas on adjacent MNDNR wildlife lands.

Explore the refuge offering 61,500 acres of diverse bird, wildlife, and plant life. Over 295 bird and 49 mammal species have been observed rightfully making it one of the 50 best places to observe wildlife and one of the 100 best places to observe birds according to the National Wildlife Foundation. Nice general brochure, bird checklist, and mammal list available. Wildlife displays and Agassiz bookshop open Mon.-Fr. 7:30 am - 4 pm, excluding Federal holidays. Sunday afternoons from 1-5pm in June. Firearm & archery deer hunting open with regular firearm season. Ruffed & sharp-tailed grouse hunting begins with the opening of regular deer firearm season. Muzzleloader deer season, youth waterfowl & youth deer hunting is open during the appropriate season.

One of 45 sites along the MN Pine to Prairie Birding Trail. Three hiking trails-one wheelchair accessible at Headquarters (trail brochures available) & at Rodahl Trail. The 4-mile Lost Bay Habitat Drive open during the ice free months.

## Major Parks

### Wildlife Areas

---

#### Thief Lake Wildlife Management Area

218-222-3747

Contact: DNR, Thief Lake Headquarters

42280 240th Ave. NE

<http://www.dnr.state.mn.us/wmas/index.html>

Primitive camping in designated areas.

55,000 acres of wildlife habitat, including marshes, forests, brushlands, and prairie. Wildlife present seasonally include waterfowl and other marsh birds, deer, moose, bear, grouse, rabbits, furbearers, songbirds, sandhill cranes, and raptors. Activities include hunting for waterfowl, big and small game, and nature viewing. A scenic overview of the lake with interpretive signing and picnic shelter are available. Contact the headquarters for maps and bird lists.

---

### Newfolden

#### City Parks/Picnic

---

#### Holt Park

218-449-3015

109 Lincoln Ave

---

### Red Lake Falls

#### State and County Parks

---

#### Old Crossing Treaty Park

218-253-2684

At Huot between Crookston and Red Lake Falls.

Pristine riverside, natural hardwoods, excellent walking, biking, swimming, tubing, boating & canoeing with public access to the Red Lake and Black Rivers. Water, power, & outdoor restrooms support all phases of free camping & day use. Superb family site.

This park was the site of an 1863 treaty between the U.S. government and Red Lake/Pembina Ojibwe. Oxcart traffic also favored the area. Historical park and historical interpretations in summer and fall. Boat landing, water, fishing, playground.

Adjacent to the park is a DNR Wildlife Management Area where hiking and wildlife watching opportunities exist.

---

### Roosevelt

#### Game Refuges

---

#### Norris Camp

218-783-6861

PO Box 100

South of Roosevelt in Beltrami Island State Forest.

Headquarters of the Red Lake Wildlife Management Area. One of the last Civilian Conservation Corps (CCC) and Resettlement Administration (RA) camps in the nation in operational condition. Listed as a historic place on the National Register. Museum on site. An excellent stop for bird watchers along the Pine to Prairie Birding Trail.

---

### Roseau

#### State and County Parks

---

#### Hayes Lake State Park

218-425-7504

48990 County Road 4

15 mi. S of Roseau on State Hwy 89, then 9 mi. E on County Rd 4.

<http://www.dnr.state.mn.us/>

18 electric sites, 35 semi-modern campsites, flush toilets, dump station, showers. Two camping cabins, two backpack sites, and one group camp. There are two handicapped sites.

Northwoods pine forest in remote lake setting. Man made lake popular for canoeing, fishing and swimming. Boat landing, Summer Nature Interpretation, playground, and picnic shelter. Bald Eagles, Gray Jay, Spruce Grouse, Winter Finches on 3,000 acres

5 miles of biking, 13 miles of hiking and 7 miles of horseback riding trails. 6 miles of groomed ski trails. 2.5 mile self guided trail. 6 miles of snowmobiling trails, and snowshoeing. Trails are located in pine forest on the edge of the lake.

### Wildlife Areas

---

#### Roseau Bog Owl Management Unit

218-463-1130

Great Gray Owl, Northern Hawk Owl, Boreal Owl, Northern Saw Whet Owl, Great Horned Owl, Spruce Grouse. Look for these various owls on 8,960 acres of peat bog covered with black spruce, tamarack and cedar.

---

#### Roseau River Wildlife Management Area

218-463-1130

27952 400th St.

Located in NW Roseau County, 8 mi. N of Badger

<http://www.dnr.state.mn.us/wmas/index.html>

Primitive camping.

62,000 acre area with several thousand acres of other public land adjoining. The unit is low and flat, part of the glacial Lake Agassiz lake plain. The Roseau River flows west for 14 miles through the unit. 3 impoundments totaling 10,600 acres have been constructed. These wetlands are managed for resident and migratory waterfowl, other wetland wildlife species, public hunting, & other recreational pursuits as well as flood control. There are 3 sanctuaries totaling 7,000 acres which provide feed, resting, & breeding areas. This WMA is uniquely large & diverse. Hunting, fishing & birdwatching are popular pursuits on the WMA.

Dikes open to hiking and snowmobiling.

---

### Stephen

#### State and County Parks

---

#### Marshall County Park of Florian

218-478-3658

10 mi. East of Stephen, MN on Co. Hwy. 6

Electrical/water hook-up, showers, flush toilets, and dump station.

Boat launch, fishing, sailing, canoeing, paddle boat rental, swimming, lifeguards, spiral slide, picnicking, playground, golf, basketball, backboards, volleyball, ball fields, ice fishing, snacks, and food stands.

Skiing and country snowmobiling, snowshoeing. 2 mile bike trail (walking, roller blading) that is handicapped accessible.

## Major Parks

### Strandquist

#### Wildlife Areas

##### East Park Dam & Wildlife Area

218-436-2427

4.5 miles NE of Strandquist.

<http://www.dnr.state.mn.us/wmas/index.html>

There are eight primitive campsites on this unit.

9,113 acres. A 450-acre State Duck Refuge exists on this unit to give waterfowl a place to rest and feed during hunting season. It is off limits to visitors from September 1st to October 31st. The 1,700 acre Nelson Slough impoundment provides excellent opportunities for viewing wetland species and waterfowl hunting.

### Twin Valley

#### Wildlife Areas

##### Neal Wildlife Management Area

218-847-1579

5 miles South of Twin Valley to Syre.

<http://www.dnr.state.mn.us/wmas/index.html>

This 1,278 acre unit is an inter-beach area of glacial Lake Agassiz. The greater prairie-chicken uses this area as a booming ground.

### Warren

#### Wildlife Areas

##### Agassiz Audubon Society

27391 190th St. NW

Experience wildlife at the beach along Glacial Lake Agassiz. To the west are the Tallgrass Prairies - to the east, the Aspen Parklands. The Audubon Center has them both. It's a great place to spot magpies & kingfishers, warblers and owls as well as the occasional otter, moose, bear, and wolf. Bring a picnic lunch and spend the day. Experience the quiet serenity of the pine groves, prairie vistas and aspen woodlands. There's plenty to see. While you're here, take a walk across the street to the Agassiz Valley flood control impoundment - one of the best birding locations in NW MN. Look for white pelicans, common loons, sandhill cranes, great blue herons, shorebirds and waterfowl. The Agassiz Valley Residential Pollinator Garden is available for you to visit, which showcases natural habitat plants, forbes, and trees. Agassiz Valley is closed during the winter months.

##### Agassiz Valley Impoundment

218-745-4741

Contact: Danny Omdahl

This flood control project provides habitat for songbirds, waterfowl, raptors, shorebirds and marsh birds as well as access for the people who want to view them. An impressive list of species have been spotted in the neighborhood including owls, bald/golden eagles, peregrine falcons, waders, sandhill cranes, rails, grouse, black-billed magpies, bobolinks, waterfowl, grassland sparrows, warblers, thrushes and shrikes.

### Warroad

#### State Forests

##### Beltrami Island State Forest

1-800-382-3474 or  
218-386-1304

20 Miles SE of Roseau

<https://www.dnr.state.mn.us/>

Camping at Bemis Hill Campground.

669,000 acres in Roseau, Lake of The Woods, & Beltrami Counties. Canoeing, fishing, hunting, picnicking and birding. This is the second largest state forest. Nearby seasonal blueberry picking at Blueberry Campground near Williams.

Hiking, Pine to Prairie Birding trail, horseback riding trails, cross country ski trails, and 138 miles of snowmobile trails. Off-road vehicles (ATVs, etc...) are allowed on all trails unless posted otherwise.

##### Lost River State Forest

South of the Canadian Border on Highway 310

<https://www.dnr.state.mn.us/>

The Lost River State Forest borders Manitoba, Canada, and is known as a good birdwatching location. Here you will have opportunities to view great gray owls as well as other birds, including spruce grouse; snowy, northern hawk, great gray, and northern saw-whet owls; whip-poor-wills; three-toed and black-backed woodpeckers; yellow-bellied flycatchers; common ravens; boreal chickadees; and magnolia warblers.

Hiking and snowmobile trails available

##### Northwest Angle State Forest

218-386-1304

Near Sprague, Manitoba on Provincial Hwy 308 to 525. Located on Lake of the Woods.

<https://www.dnr.state.mn.us/>

Boat Launch, power boat rental, canoeing, sailing, fishing, historical and summer nature interpretation.





## City Parks Info

### Ada

#### **Bosworth Park** 218-784-5520

Contact: Ada City Hall  
Camping area

Electricity, new accessible restrooms, volleyball setup, horseshoe pit, picnic shelter, disc golf, playground, and grilling pits.

#### **Dekko Park** 218-784-7665

2 blocks east of Hwy 200 on 4th Ave.  
2 sand volleyball courts, picnic shelter, playground, historical marker of 1997 flood, hockey rink, warming house, and softball field.

#### **East Side Park** 5th St E

3 blocks East of Downtown  
Flower beds, fruit trees, walking path, gazebo, tables, and benches.

#### **West Side Park** 218-784-5520

Contact: Ada City Hall  
Picnic shelter, electricity, toilets, playground, and horseshoe pits.

### Argyle

#### **John Kurz Memorial Park** 218-437-6621

On Hwy 75.  
New shelter with restrooms and shower new in 2020. Grills, playground, horseshoes, fishing, pioneer house, and covered bridge/walkway. Limited camping hookups with water, sewer and electrical. Groceries near. Camping May - Oct.  
On Hwy. 75

### Badger

#### **Durgin Memorial Park** 218-242-7916

County Rd 2 or West University Ave  
Camping May - Sept, water and electrical hookups, dump station.  
Shelter/picnic area, restrooms, and playground. Easy walking distance to downtown.  
Snowmobile Trail

### Borup

#### **Borup City Park** Picnic shelter & nearby playground equipment

### Brooks

#### **Brooks City Park** 218-698-4220

On Highway #92  
Picnic area with tables and playground.

### Crookston

#### **Alexander Park** Alexander St and 4th Ave NE Playground, basketball court, horseshoe pit, shelter.

#### **Carman Park** 218-281-1242

5th Ave. S & Erskine St.  
Picnic shelter, playground, basketball, volleyball

#### **Castle Park** Castle and Carroll St Playground, picnic area, dog park, green space and trails.

#### **Courtyard Park** N Main St and W Robert St Fountain and sitting benches, Shelter and playground, tiered garden.

#### **Crescent Avenue Park** Playground, picnic tables

#### **Eugene Field Park** 218-281-1242

Minnesota and Woodland Ave  
Picnic area, playground, and basketball shelter.

#### **Evergreen Park** 218-281-1242

Evergreen Drive and Cedar Ave  
Playground, basketball and picnic tables

#### **Highland Park Complex** 218-281-1242

Central Ave N and Barrette St.  
Softball, baseball, horseshoe, tennis courts, volleyball, playground equipment, picnicking, skate park, splash park, bathrooms, and concessions available during certain hours.

#### **Hoven Lane Park** 218-281-1242

Hoven Lane & Radisson Rd  
Picnic area, playground, and basketball.

#### **Johnson Park** Stephens Dr and Radison Rd Playground, picnic tables

#### **Locken Park** S Ash St and E Roberts St Memorial trees and sitting benches, wooded area, and trails

#### **Maplewood Park** West Loring St Playground, picnic tables.

#### **North Broadway Park** North Broadway and 6th Ave NW

## City Parks Info

### Old Museum Park

Washington Ave and Jerome St  
Playground

### Schuster Park

218-281-1242

Memorial Dr. & Locken Blvd.  
Picnic area, playground equipment, tennis court and basketball.  
Shelter.

### Stearns Park

Stearns St and North Broadway  
Playground, basketball.

### Town Square

N. Ash and 3rd St. East  
"The Barn" Pavilion", event shelter, benches, and bike racks.

### Walsh Park

Walsh St and Linden Ave  
Playground, shelter

### Wild Flower Garden

South Main Street

Picnic area, benches, and gardens

### Wildwood City Park

218-281-1242

Myrtle St. & Nettie St.  
Sheltered picnic, cooking areas, bathrooms, playground, and basketball.

### Central Park

218-281-1242

N. Ash & Mitchell Lane  
20 Units with electrical hookups, separate showers, and flush toilets. Dump station is near the arena. Camping May - Oct.  
Boat landing, fishing, swimming pool with a movie theatre and frisbee golf within two blocks. The campground is within easy walking distance of downtown.

## East Grand Forks

### Bob Zavoral Memorial Park

114 3rd ST SE

Locate at the intersection of 3rd Ave SE and 1st St SE  
12 hole Disc Golf Course

### DanMor Park

Morgan Place & 9th Ave SE

DanMor Park covers 1/1 acres. A sub-neighborhood park, amenities include playground equipment, swingset, slide and picnic table.

### Harney Park

218-773-8000

19th St NW & 12th Ave NW

Harney Park covers 1.1 acres and park amenities include playground equipment, slide, swingset and picnic table.

### ITTS Williams Park

218-773-8000

Ball field, picnicking, and playground.

### Lafave Park

701-746-0444

Central Ave NW and Demers to 2nd Ave NE EGF  
Boat Launch, fishing, trails, softball, and football fields.

### Nash Park

218-773-8000

22nd St NW & 10th Ave. NW  
Skating, picnicking, soccer, and playground. Indoor picknicking area to rent.

### O'Leary Park

218-773-8000

711 3rd St. SE  
Picnicking, skating, indoor recreation, tennis, fire pits, horseshoes, sand volleyball, playground, and 2 shelters.

### River Heights Trail Head

218-773-4950

River Road and 12th St NW  
2 Shelters with tables and grills available for reservation through Red River Campground.

### Sherlock Forest Park and playground

218-773-8000

607 5th Ave NW

Picnicking, grills, swimming pool, volleyball, toilets, and playground.  
2 Shelters. Near East Grand Forks Pool.

### The Greenway

701-787-3756

Along the Red River in Grand Forks and East Grand Forks  
<http://www.greenwayggf.com/>  
Consists of 2,200 acres lining the Red River & Red Lake River, flowing through Greater Grand Forks. This picturesque urban space offers countless recreational, cultural, historical & natural resource opportunities. You can hike, walk, inline skate, bike, cross-country ski, bird, canoe, fish, golf & much more in the heart of our two cities. An asphalt trail system covers over 20 miles.

## Erskine

### Erskine Park

218-687-4646

On Lake Cameron  
Picnicking and swimming. Boat landing.

## Fertile

### J.D. Mason Park

218-945-3136

2nd St. SW  
Covered shelter, picnic tables, and water faucets. During the summer, outdoor toilets are open.

## City Parks Info

### Fisher

#### Fisher's Landing Park 218-773-7879

Located on Highway 2  
Picnic tables and toilets.

### Fosston

#### Berge Stafford Park

On Mary Ave

From Hwy 2, turn North on Larson, go 3 blocks.

\* May-October

Picnicking with tables, shelter, cooking areas, playground, a pond and restrooms.

#### Melland Park

Intersection of Highway 2 and County Rd. 1 (Columbia Road)

Site of the East Polk Heritage Center, and the Veteran's Memorial. Picnicking with tables, walkways, and restrooms. A Wayside Chapel, Historical buildings. Open May - Oct.

#### Rotary Park

900 2nd St NE

Located adjacent to the Sports Complex and has a number of attractions for visitors. It features a picnic shelter, horseshoe pits, a birding observation tower and a quaint boardwalk nature trail that allows visitors to observe a variety of bird species.

#### Sports Complex

900 2nd St NE

Located on the very most east end of Fosston on the north side, 900 2nd St NE. Features 4 baseball/softball diamonds, enclosed concessions building, full parking and stadium bleacher seating in each diamond. Also an ice rink and warming house are open with special winter hours.

#### Cross Lake/Tilberg Park

218-435-1195

Camping with electrical hookups, dump station.

Boat landing and launch, power boating, canoeing, sailing, fishing, picnicking, swimming, ice fishing. Located just a few miles out of Fosston on Cross Lake. While there you can enjoy the beautiful hardwood maple trees, have a picnic under the picnic shelter and fish in Cross Lake.

### Gary

#### Gary City Park 218-356-8600

Contact: City of Gary

Picnic shelter, volleyball, and a sandpile for kids.

#### Gary Pines 218-356-8600

Contact: City of Gary

Open year round. Picnic and rest area in wooded pine tree area.

### Goodridge

#### City Park & Lions Park 218-378-4113

4 Units, electrical and water hookups.

Picnic shelter in Lions Park. Tennis court, basketball area, and horseshoe pits.

### Greenbush

#### Greenbush School 218-782-2570

Softball, swimming pool, playground, and skating, Skateboard/BMX park

#### IS Folland Welcome Park 218-782-2570

Picnic shelter, restrooms, playground, hiking, cross country skiing, sledding hill, biking trail, zip line, and grills.

#### North End Park 218-782-2570

Basketball court, playground, sand volleyball court, and picnic tables.

#### Shanoah Park 218-782-2570

Basketball, playground equipment, and picnic tables.

### Grygla

#### Klein Memorial Park 218-294-6292

Picnic shelter, softball fields, playground, tennis court, basketball court, and horseshoe pits.

Hiking trail along Mud River.

#### Grygla Park 218-294-6292

Camping with restrooms, showers and electrical, sewer and water hookups.

Picnic shelter and playground.

### Gully

#### Gully City Park 218-268-4591

By the Gully Community Center, Main St.

Picnicking, playground, basketball court, volleyball every Thursday night during the summer

### Hallock

#### Gazebo Park 218-843-2737

Downtown Hallock

rogorek@hallockmn.org

Picnic Area



## City Parks Info

### Gilbert Olson Park

218-843-2737

rogorek@hallockmn.org

48 campsites with electrical hookups, showers, flush toilets, and a dump station.

Located on the south branch of the Two Rivers. Park is adjacent to Hallock's nine-hole grass greens golf course. Canoeing, fishing, swimming, playground, basketball & volleyball.

## Halma

### Halma City Campground/Park

218-265-2084

Campground

Playground equipment, picnic tables.

## Halstad

### Disc-o Park

9-hole disc golf course near the scenic Red River of the North.

Information and scorecard can be found at:

<http://www.halstad.com/amenities/recreation/disc-golf>

### Halstad Park

218-456-2128

On 5th Ave. E

Large shelter with bathrooms, kitchen, picnic tables, basketball court, playground equipment & a walking path.

### Halstad Riverside Park

218-456-2128

Biking, boat launch, power boating, fishing, hiking, picnicking, ski touring, snowmobiling, and snowshoeing. Located on the Red River.

### Peterson Park

218-456-2128

On 6th St. West

Playground equipment, swings, picnic tables, and a bathroom.

## Hendrum

### Hendrum Community Park/Campground

218-861-6210

1/2 mile E. of Hendrum on Co. Rd. 25

Campsites with electrical hookups, RV hookups, sewer, and dump site.

Picnic tables, restrooms, shelter, playground, ball park, and bleachers. There is a boat launch on the Red River approx. 1 mile west of the city. There are groceries, restaurant, deli, gas and fuel station, game and fish licensing nearby. (Hendrum is noted for catfish fishing on the Red River of the North just west of the city, and other species in the Red and Wild Rice Rivers just north of the city.)

## Holt

### Holt City Park

218-686-4439

On the East Side of Highway 32.

Primitive camping available and outdoor restrooms.

Picnic area and playground.

## Karlstad

### Tri-County School Park

Penbane and Trail St

Large play area with wide variety of playground equipment.

## Kennedy

### Kennedy City Park

218-674-4142

Picnic area, electricity, playground, and water access.

### Kennedy Community Garden

218-674-4142

Contact: Kennedy City Office

Picnic area and water access.

## Lake Bronson

### Lake Bronson City Park

218-754-2710

Playground equipment, tennis courts, basketball court, and baseball diamond.

### Village Square

218-754-2710

1st Ave. N

Sheltered picnic tables, flush toilets, and electricity.

## Lancaster

### Gazebo Park

218-762-6472

Downtown

Beautiful flowers, water fountain, and gazebo. Picnic tables, park benches, and electricity. Available for weddings.

### Lancaster Park

218-762-6472

State Highway 59 North

28 camp units, electric hookups, showers, flush toilets, and a dump station.

287 acres, playground, summer nature interpretation, picnicking, golf, and cross country skiing. Groceries and restaurant close by.

8 mi. of walking trails, biking, and hiking. 7 mi. of groomed intermediate cross country ski trails. Scenic setting along the river & wooded areas. Snowmobiling & snowshoeing.

### Sports Complex Park

218-762-6472

Playground equipment, baseball diamonds, and bathrooms.

## Lengby

### Lengby City Park

218-668-2219

Picnicking and playground.

## City Parks Info

### Spring Lake Park

218-668-2229

Contact: Lengby Improvement Club

Boat landing, swimming beach, fishing dock, gazebo, and kitchen building.

### McIntosh

#### McIntosh City Park

218-563-3043

Northeast 2nd St

Camping March - September, dump station, electrical hookups, water & sewer hook-ups, flush toilets, showers and handicapped accessible.

Picnic area, ball field, volleyball, and playground. There is a restaurant located up town. Groceries are available uptown or at the gas station which is open on weekends and evenings. Fishing and ice fishing available at Hill River Lake (5 mi. NE of McIntosh).

### Newfolden

#### Newfolden Centennial Park

downtown Newfolden

Garden area with benches

#### Stan Holmaas Memorial Park

East side of US Highway 59

New playground, bench seating, picnic table, water bottle filling station, off street parking and prairie landscaping. Learn more about Stan Holmaas - A leader and advocate for the community of Newfolden!

#### Newfolden City Park/Campground

218-874-7135

West side of Hwy 59

9 campsites with electrical, water, and sewer hookups.

New playground equipment, plumbed toilet facilities and a picnic shelter. No reservations taken, first come - first serve basis only.

### Nielsen

#### Nielsen City Park

218-946-3205

Hanson's Addition, 4th St W

By the water tower.

Picnic area and playground equipment

### Oklee

#### Oklee City Park/Campgrounds

218-796-5183

One campground located on the N edge of town

Camping Available

Picnicking in North parks. Park Shelter with electrical hookups. Kayaks and launching dock.

### Perley

#### Perley City Park

218-861-6170

Picnic tables, shelter, tennis court, and playground.

### Plummer

#### Centennial Park

218-465-4215

Downtown Plummer, 151 Central Ave. E.

Gazebo with beautiful garden area.

#### People's Park

By Clearwater River

610 Central Ave. W.

Beautiful view of Clearwater River. Picnic Shelter with picnic tables and grills. Kayak and canoe landing.

#### Veteran's Park

218-465-4231

305 Central Ave. E.

Camping with electrical, water, and sewer hookups. Indoor bathroom facilities with flush toilets and showers.

Park shelter with picnic tables and playground equipment. Frisbee golf course. Veterans Memorial Visitor Area, view Plummer Centennial logo on north entrance of building and fire dept. bell/garden at south entrance.

### Roseau

#### Downtown Pocket Park

218-242-0063

Main Ave. N, Downtown Roseau

Picnic tables, seating, and landscaping

#### East Diverson Greenway/ATV Terrain Park

Directly East of the Roseau City Park on the north side of the Co Rd 24 bridge.

Nearly 1,000 acres of greenway along the Roseau River Flood Diversion project. This area provides a natural area for plants and wildlife as well as recreation. One feature of the greenway is a 4.5 mile paved non-motorized recreational trail running the full length of the Diversion, starting as Roseau City Park. Additionally there are designated ATV trails and an ATV terrain park incorporated into the greenway space. Another feature constructed by a local bike club is nearly 13 miles of single track mountain bike trails in and around large spoils piles from the diversion construction, dubbed Mt. Roseau.

#### Mother's Memory Garden

218-242-0063

Intersection of MN Hwy 11 and 2nd Ave. NE

Garden filled with flowers and plants handed down for generations. Benches and paved sidewalks.

#### North Star Park

218-242-0063

Intersection of 7th St. SW and 8th Ave. SW

Picnic shelter, grills, bathroom, playground, and soccer field.

#### Roseau City Park

11th Ave SE along the Roseau River

Boat and kayak launch, fishing pier, playground, shuffle board, horseshoes, sand volleyball, disc golf, walking & biking trails, picnic shelters and indoor shelter to rent, BBQ pits, fire rings and bathrooms. 10 RV sites with water and electric hook-ups, 10 primitive tent sites. Includes showers and bathrooms and dump station.

## City Parks Info

### South Riverview Park

Located South of the Roseau City Center

Central gathering area for the community with various summer and winter activities. The park is home to the Roseau splash pad. 2,500 SF skate concrete park with various ramps, jumps and features for skateboarders, rollerbladers and bmx bikers. The park also provides a central shelter/restroom facility. The park is also home to a small half court basketball play area. In the winter South Riverview Park provides a small recreational skating rink and sledding hill. The shelter serves as a winter warming house.

### West Side Park

218-242-0063

Center St. W, west of the West Side Mobile Home Park  
Playground equipment, ballfield, basketball court and zip line.

## Shelly

### Shelly City Park

Playground, picnic tables, shelter, tennis court, and ball diamond.

## St. Hilaire

### St. Hilaire City Park

218-964-5257

Right off of Hwy. 32, in town.

30 sites with electric, water and sewer hookups. Five additional sites with electric only. Clean restrooms with flush toilets and showers.

Two picnic shelters, canoeing, fishing, picnic, playground, ice fishing, horseshoe pits, 2 softball diamonds. Large outdoor shelter on the Island that can be rented for family reunions, outdoor events, etc. Contact city clerk at number above.

Hiking, snowmobile trail and a walking trail a little over a mile.

## Stephen

### Pioneer Park

218-478-3614

on Riverside Drive

Fishing, picnic shelters, boat ramp, playground, tennis, basketball, ice skating, and hockey. Groceries and restaurants close by.

## Strandquist

### Strandquist City Park

218-597-2689

Uptown

Park shelter and picnic tables.

## Strathcona

### Strathcona City Park

218-781-2242

Hwy 32 South, 1 block south of Cenex

Outdoor bathrooms, electrical and water hook-ups.

Playground. Snacks and groceries right across the street.

Trails in and out of town - gas and food available.

## Thief River Falls

### Red Robe Park

218-681-2519

Hwy. 1 E. at Thief River Bridge

Picnic tables and shelter, electricity, bathroom facility, playground, parking lot, fishing pier, statue of Chief Red Robe and the RiverWalk.

### Alan-A-Dale Park

218-681-2519

On Nightingale Road

Nature Park only.

### Annie Street Park

218-681-2519

On Annie Street and Markley Avenue.

Playground equipment

### Boy Scout Park

218-681-2519

3rd Street (Hwy. 59) and Markley Avenue

Picnic tables, parking lot, kayak launch, and boat landing.

### Centennial Park

218-681-2519

On Centennial Dr. and Hwy 1 East.

Picnic tables, picnic shelter, bathroom facility, parking lot, boat landing, horseshoe pits, volleyball court, water and electricity.

### Elks Park

218-681-2519

At 3rd St. and Davis.

RiverWalk, fountain, park benches, electricity, trail system, and a kayak launch.

### Engelstad Park

218-681-2519

On First St. and Crocker Ave.

Electricity, water, basketball court, tennis court, skating rink, warming house, and modern bathroom facility.

### Finsbury Park

218-681-2519

On Robinhood Drive

Nature park

### Floyd B. Olson Park

218-681-2519

At 3rd St. and Knight Ave.

Picnic tables, electricity, water, parking lot, swing set, and gazebo.

### Greenwood Park and Recreation Area

218-681-2519

On the East side of the Red Lake River on Greenwood Street.

Natural trails, small shelter, cross country skiing, and an environmental learning lab.

### Hartz Park

218-681-2519

On Riverside Ave. along the River.

Picnic tables & shelters, electricity, bathroom facility, new playground structure, fishing, sand volleyball, and asphalt pathway. Pedestrian bridge and Riverwalk across Red Lake River.



## City Parks Info

### LaFave Park

218-681-2519

At Crocker Avenue and Taft Street.

Picnic tables, electricity, water, modern bathrooms, volleyball on the beach, basketball court, parking lot, playground, swimming beach, and bathhouse.

### Lions Park

218-681-2519

At Nora Street and Merriam Ave.

Picnic tables and shelters, electricity, water, modern bathroom, horseshoe pits, playground equipment, and 9 hole frisbee golf course.

### Millyard Park

218-681-2519

At Pennington Ave. along the Red Lake River

Picnic tables, parking lot, ADA Fishing Pier, overlooks to view river along the Riverwalk.

### Northrup Park

218-681-2519

On 9th St. and LaBree Ave.

Skating rink, warming house, playground equipment, picnic shelter, tables, & electricity.

### Oakland Park

218-681-2519

At the end of Baken St.

Picnic tables and shelters, electricity, water, bathroom facility, swingsets, horseshoe pits, volleyball area, softball field, canoe landing, and parking lot.

Walking trail

### South Town Park

218-681-2519

500 E. Hickory Rd.

Picnic tables and playground.

## Trail

### Trail City Park

218-268-4465

Main Street

Picnicking with tables and playground.

Snowmobile Trail

## Twin Valley

### East Playground, Garden and Gazebo Parks

218-584-5254

East Playground Park: Playground and ice rink area. From Hwy 32 turn East onto Lincoln Ave. NE, 3 blocks.

Garden Park: Picnic tables. Along Hwy 32, South from watertower.

Gazebo Park: Picnic tables and sand volleyball. Along Hwy 32

### Heiberg Parks

218-584-5254

N. of Twin Valley on Hwy. 32 on the east & west side of the road.

East: Picnic Shelters, Playground, Primitive Toilets

West: View of the Heiberg Dam, Picnic Shelter/Benches, Electric Hookup Campground, Fishing, Boating & Swimming Area.

Sidewalks for Handicap Accessibility

## Viking

### Viking Park

Shelter, picnicking, playground, basketball, tennis, and ice skating.

## Warren

### Centennial Park

218-745-5343

N. Main Street.

Small picnic area and gazebo.

### Island Park

218-745-5343

End of S. Division St.

Natural play area with a modern setting around the outside of the park. It's like playing in your own backyard! Childrens new playground equipment.

### Holiday Park and Campground

218-745-5343

8th St. N., Northeast corner of town.

Campground, electrical hookups, sewer and water hookups, flush toilets, showers, and dump station.

Extensive playground equipment, swimming pool, baseball/softball, tennis courts, volleyball, basketball, frisbee golf, horseshoe, golf, picnicking, snacks, and groceries. Near golf course and fairgrounds.

## Warroad

### Allison Park

218-386-1454

Lake St NE

Allison Park was built in the memory of Allison Marvin and embodies the spirit of the Northborn children. The park features a playground, covered picnic areas, a gazebo, a grand gazebo, splash pad, and a hill for sledding in the winter and amphitheater seating in the summer. The amphitheater is attached to the pavilion that has its own set of tables and chairs, corn hole boards, and a mini kitchen to rent out for various events. The Northborn statue installment is an interactive display of deer, bear, wolves, and ducks for kids to play on or for great photo opportunities. The main feature of the installment is a Minnesota sign that displays the Northern Lights year-round and proudly announces, "We are Northborn." known as the Northborn Statues. Don't miss the big sign of Minnesota that says "We are northborn" and has the northern lights displayed on it at night.

### Harbor Park

River St. NE

Harbor Park was dedicated to the community of Warroad on July 4, 2004 in memory of George G. Marvin, founder of Marvin Lumber and Cedar Co. The Harbor Park area is an ideal spot for boat and bird watching, fishing, and relaxing near the water.

## City Parks Info

### Point Park

218-386-1004

Public boat access, ample parking, fishing pier, and heated fish cleaning houses make Warroad Point Park a terrific home base for fishermen. The park also offers newly constructed playground equipment, picnic shelters, campground, and an outdoor swimming pool.

Nature viewing from Warroad Point Park's observation tower and drive-up nature viewing area offer a terrific opportunity for bird watching as the park is the first stop on the Pine to Prairie Birding Trail. Warroad's paved walking/biking path begins at the park and weaves through the outskirts of town. Casino gaming, shopping, and lakeshore dining are within a block or two of the park.

### Rainbow Park

On the point, near the Warroad city campgrounds  
Children's playground

### Veterans Memorial

Corner of Elk St. and Hwy 11

This beautiful memorial commemorates our United States Armed Forces. The memorial was dedicated in May 2004.

### Warroad City Park

218-386-1004 or  
218-386-1454

RV/Camping with electrical, water and sewer hook-ups, showers, flush toilets, dump station.

Public boat access, ample parking, fishing pier and heated fish cleaning houses make Warroad Point Park a terrific home base for fishermen. The park also offers newly constructed playground equipment, picnic shelters, campground and an outdoor swimming pool. Nature viewing from Warroad City Park's observation tower and drive-up nature viewing area offer a terrific opportunity for bird watching as the park is the first stop on the Pine to Prairie Birding Trail. Casino gaming, shopping, and lakeshore dining are within a block or two of the park. Park also features volleyball and mini golf. Paved walking/biking path.

## Winger

### American Legion Park

218-938-4150

Picnic area with tables.



## Camping and Resorts

### Ada

#### City Parks/Picnic

##### **Bosworth Park** 218-784-5520

Contact: Ada City Hall  
On Hwy 9 south of Hwy 200  
Camping area

Electricity, new accessible restrooms, volleyball setup, horseshoe pit, picnic shelter, disc golf, playground, and grilling pits.

### Argyle

#### City Parks/Picnic/Camping

##### **Island Park** 218-437-6621

At the intersection of 5th St. and River St.  
Campsites with water and electrical hook-ups, and portable toilets.  
Camping available May-October.  
Picnic shelter, grills, playground, horseshoe, and fishing. Groceries near.

### Badger

#### Campgrounds/Resorts

##### **Howell RV Park** 218-528-3612

Contact Danny Howell  
32247 County Road 14  
The Howells have RV lots available with water, sewer, and electrical hook-ups.

#### City Parks/Picnic/Camping

##### **Durgin Memorial Park** 218-242-7916

County Rd 2 or West University Ave  
Camping May - Sept, water and electrical hookups, dump station.  
Shelter/picnic area, restrooms, and playground. Easy walking distance to downtown.  
Snowmobile Trail

### Crookston

#### City Parks/Picnic/Camping

##### **Central Park** 218-281-1242

N. Ash & Mitchell Lane  
20 Units with electrical hookups, separate showers, and flush toilets. Dump station is near the arena. Camping May - Oct.  
Boat landing, fishing, swimming pool with a movie theatre and frisbee golf within two blocks. The campground is within easy walking distance of downtown.

### Donaldson

#### Campgrounds/Resorts

##### **Donaldson RV Lots** 218-466-2321

Donaldson has one large lot with space for 3 RVs. Sewer and garbage provided by the city, rural water hookups, and electricity from Ottertail.

### Erskine

#### Private Campgrounds/Resorts

##### **Farmer's Union Campground** 218-687-3408 (summer only)

On Lake Sarah, 38524 200th Ave. SE  
lake.sarah@mfu.org  
<http://www.mfu.org/pages/LakeSarahCamp/>  
Electrical and water hookups, showers, and flush toilets.  
Swimming beach and playground.

##### **Lake Cameron RV Park & Campground** 218-687-4678

On US Hwy 2, 1/2 mile west of Erskine.  
32 Sites, RV parking, electrical and water hookups, flush toilets, sewer, dump station, cable TV, and laundry. Hot showers available.  
Shopping, restaurant, ice, fishing, and swimming 1/2 mile away.  
Reservations accepted.

##### **Union Lake Sarah Campground** 218-687-5155

Off Polk County 41 between Union Lake and Lake Sarah. 20049 Campground Rd. SE  
72 Campsites, 2 central showers, flush toilets, dump station, water and electrical hook-ups, and laundry facilities.  
Playground, picnic area, boat landing, boat rental, canoes, paddle boats, pontoon boat, fishing, bait and tackle. Ice, snack shop and groceries. Ideal site for camping and fishing walleye, northern, bass, crappie, and sunfish.  
Hiking.

### Fertile

#### City Parks/Picnic

##### **Cannon Park** 218-945-3136

Primitive camping with electric hook-ups.

### Fosston

#### Campgrounds/Resorts

##### **City of Fosston Campground** 218-435-1959

224 S Johnson Ave  
From traffic light on Hwy 2, go south on Johnson Ave 2 blocks.  
Camping, electrical & water hookups, dump station, flush toilets, sewer, and showers.  
11 sites, all with 30 amp electric.



# Camping and Resorts

## City Parks/Picnic/Camping

### Cross Lake/Tilberg Park 218-435-1195

Camping with electrical hookups, dump station.

Boat landing and launch, power boating, canoeing, sailing, fishing, picnicking, swimming, ice fishing. Located just a few miles out of Fosston on Cross Lake. While there you can enjoy the beautiful hardwood maple trees, have a picnic under the picnic shelter and fish in Cross Lake.

## Goodridge

### City Parks/Picnic/Camping

### City Park & Lions Park 218-378-4113

4 Units, electrical and water hookups.

Picnic shelter in Lions Park. Tennis court, basketball area, and horseshoe pits.

## Greenbush

### City Parks/Picnic/Camping

### Legion Park 218-782-2570

Contact: City Office

Campground, electrical and water hook-ups, fire rings, flush toilets, dump station, and showers. Rent \$10 per day non-electric sites and \$20 per day for electric sites.

Picnicking, golf, biking, baseball diamonds, and playground. Swimming pool 1/4 mile from park.

### Outfitters/Bait Shops

### Blooming Valley Outfitters 218-782-BEAR

Located 23 Miles North of Greenbush, MN 23632 220th St.

lemery@wiktel.com

www.bloomingvalleyoutfitters.com

Cabins/tent sites available with full meal service included on hunts.

Full service guide for bear, deer, waterfowl and varmint hunts.

Snowmobiling, four-wheeling, horseback riding, cross country skiing & fishing are all available. Close to groomed snowmobile trails & many backwoods trails for four-wheelers.

## Grygla

### City Parks/Picnic/Camping

### Grygla Park 218-294-6292

Camping with restrooms, showers and electrical, sewer and water hookups.

Picnic shelter and playground.

## Hallock

### City Parks/Picnic

### Gilbert Olson Park 218-843-2737

rogorek@hallockmn.org

48 campsites with electrical hookups, showers, flush toilets, and a dump station.

Located on the south branch of the Two Rivers. Park is adjacent to Hallock's nine-hole grass greens golf course. Canoeing, fishing, swimming, playground, basketball & volleyball.

### City Parks/Picnic/Camping

### Horseshoe Park 218-843-2737

Near downtown Hallock.

rogorek@hallockmn.org

Electrical hookups, flush toilets, and dump station.

Picnic shelter and playground.

## Halma

### City Parks/Picnic/Camping

### Halma City Campground/Park 218-265-2084

Campground

Playground equipment, picnic tables.

## Hendrum

### City Parks/Picnic/Camping

### Hendrum Community Park/Campground 218-861-6210

1/2 mile E. of Hendrum on Co. Rd. 25

Campsites with electrical hookups, RV hookups, sewer, and dump site.

Picnic tables, restrooms, shelter, playground, ball park, and bleachers. There is a boat launch on the Red River approx. 1 mile west of the city. There are groceries, restaurant, deli, gas and fuel station, game and fish licensing nearby. (Hendrum is noted for catfish fishing on the Red River of the North just west of the city, and other species in the Red and Wild Rice Rivers just north of the city.)

## Holt

### City Parks/Picnic/Camping

### Holt City Park 218-686-4439

On the East Side of Highway 32.

Primitive camping available and outdoor restrooms.

Picnic area and playground.

# Camping and Resorts

## Karlstad

### City Parks/Picnic/Camping

#### Karlstad Moose Park

218-436-2178

Contact: City Office

Hwy 59 N. North Edge of Karlstad

karlstadcity@wiktel.com

16 Units, electric hook-up, dump station, water hook-up, and flush toilets. 8 full hook-up sites available.

Playground, tennis courts, softball fields, skating rinks, and picnic area with shelters. Events occasionally hosted at Gazebo. Call city for more information and schedule.

## Lancaster

### City Parks/Picnic

#### Lancaster Park

218-762-6472

State Highway 59 North

28 camp units, electric hookups, showers, flush toilets, and a dump station.

287 acres, playground, summer nature interpretation, picnicking, golf, and cross country skiing. Groceries and restaurant close by.

8 mi. of walking trails, biking, and hiking. 7 mi. of groomed intermediate cross country ski trails. Scenic setting along the river & wooded areas. Snowmobiling & snowshoeing.

## McIntosh

### City Parks/Picnic/Camping

#### McIntosh City Park

218-563-3043

Northeast 2nd St

Camping March - September, dump station, electrical hookups, water & sewer hook-ups, flush toilets, showers and handicapped accessible.

Picnic area, ball field, volleyball, and playground. There is a restaurant located up town. Groceries are available uptown or at the gas station which is open on weekends and evenings. Fishing and ice fishing available at Hill River Lake (5 mi. NE of McIntosh).

## Mentor

### Campgrounds/Resorts

#### Maple Lake Resort

218-779-1133

2 miles South of Mentor on County Hwy 12

<http://www.maplelakeresort.com>

Seasonal RV Campsites with full hookups.

Beautiful wooded lots, nearby lake, peaceful setting, walking, biking, hiking, golf carting, summer fishing, picnics and campfires.

#### Polk County Campground

218-574-2254

S. of Mentor, on Maple Lake

Electrical and water hookups, dump station, sewer, flush toilets, swimming beach, fishing, and boat landing.

## City Parks/Picnic/Camping

#### Mentor City Park

218-637-2911

Primitive camping only.

Covered shelters, picnic tables, playground, water available at the Community Center hydrant, no flush toilets. Lovely creek runs through the park.

## Private Campgrounds/Resorts

#### Lakeview Resort

218-637-6237

16233 340th St. SE. On Maple Lake, 3 mi. E of Hwy 2 on Co. Rd 10.

\* Open year round

Lodge, electrical and water hookups, sewer, dump station, showers, flush toilets, and laundry.

Groceries, snacks, lounge, and restaurant. Swimming beach, sand volleyball, playground, boat ramp, fishing, and bait.

#### Oak Cove Resort

218-637-2124

15598 Oak Cove Resort Rd SE, 2 miles south of US Hwy 2 on County Road 12 on Maple Lake.

<https://oakcoveresortandmarine.com/>

Shaded camping sites overlooking Maple Lake. Electrical and water hookups, dump station, showers, and flush toilets.

Groceries, ice, and snacks. Swimming beach, playground, fishing, tackle, live bait, boat rental, motor rental, jet ski rental, gas, and boat ramp. Full service marina-boat sales, parts, and repairs. Nearby golf course and laundry.

#### Ullands Resort and Campgrounds

218-637-3252

33335 173rd Ave. SE, 1 mile East and 1 mile South of Mentor on Maple Lake.

Electric/water hookups, sewer, dump station, showers, & flush toilets.

Swimming beach, playground, and boat landing.

## Middle River

### City Parks/Picnic/Camping

#### Middle River Park & Campground

West side of Hwy 32

Electrical and water hookups, dump station, and new shower facility. Camping April - November.

Playground. There is a restaurant, groceries and snacks close by.

## Newfolden

### City Parks/Picnic/Camping

#### Newfolden City Park/Campground

218-874-7135

West side of Hwy 59

9 campsites with electrical, water, and sewer hookups.

New playground equipment, plumbed toilet facilities and a picnic shelter. No reservations taken, first come - first serve basis only.

# Camping and Resorts

## Oklee

### City Parks/Picnic/Camping

#### Oklee City Park/Campgrounds 218-796-5183

One campground located on the N edge of town  
Camping Available  
Picnicking in North parks. Park Shelter with electrical hookups.  
Kayaks and launching dock.

## Oslo

### City Parks/Picnic/Camping

#### Oslo Park 218-695-3841

S. of the intersection of Hwy 1 and Main St.  
Camping facility for RV/fifth wheel/hitch camper/tent – electricity/water hookups & sewer dump station. Flush bathroom facility – no showers. Grocery store, café, liquor store, and gas station nearby.  
Boat landing just three blocks from campground. Catfishing, playground, picnic shelters, grills, ballfield, and a horseshoe court.

## Plummer

### City Parks/Picnic/Camping

#### Veteran's Park 218-465-4231

305 Central Ave. E.  
Camping with electrical, water, and sewer hookups. Indoor bathroom facilities with flush toilets and showers.  
Park shelter with picnic tables and playground equipment. Frisbee golf course. Veterans Memorial Visitor Area, view Plummer Centennial logo on north entrance of building and fire dept. bell/garden at south entrance.

## Red Lake Falls

### City Parks/Picnic/Camping

#### Riverside City Park 218-253-2684

redlakefalls.com  
RV camping, water and electrical hook-ups, showers, dump station, and flush toilets.  
Picnic sites and shelter, playground equipment, tennis courts, horseshoe pits, and fishing. Located on the Clearwater River in a nice wooded area of the city. Make online reservations for camping at redlakefalls.com

#### Sportsman's Park 218-253-2684

Contact: City Administrator  
At the junction of the Red Lake & Clearwater Rivers.  
redlakefalls.com  
Primitive campsites for tents with indoor toilets/showers. RV camping, 7 water/electrical hook-ups & 10 water/electric/sewer hook-ups. Make online reservations for camping at redlakefalls.com  
Plenty of space for picnics and outings. Boat landing and fishing.  
Hiking, and cross country ski trails.

## Private Campgrounds/Resorts

#### Voyageurs View Campground 218-253-4329

18611 105th Ave. SW. Co Rd 13 N  
<http://www.voyageursview.com/>  
Electrical & water hook-ups, showers, flush toilets & primitive camping. Camping Memorial day to Labor day.  
Tubing with shuttle service, 2-3 hours of tubing with islands & rapids, canoeing, boat rental, fishing, miniature golf, remote control car track, volleyball, horseshoes, playground, gameroom, souvenir lodge, groceries, & snacks.

## Roosevelt

### Campgrounds/Resorts

#### The Hawk Campground 218-442-2470

On Hwy. 11 behind the Hawk.  
Campground behind the Hawk Restaurant that has primitive sites as well as camper sites, electrical and water hookups and a dump station. Restaurant/lodge nearby.

## Private Campgrounds/Resorts

#### Arnesen's Rocky Point 800-535-7585

6760 Rocky Point Rd NW  
On Lake of the Woods, 6760 Rocky Point Road  
<https://arnesens.com/>  
Cabins for rent, campground with complete RV hookups.  
Boat rental, summer and winter fishing, boat landing, bait shop, playground, and restaurant.

## St. Hilaire

### City Parks/Picnic/Camping

#### St. Hilaire City Park 218-964-5257

Right off of Hwy. 32, in town.  
30 sites with electric, water and sewer hookups. Five additional sites with electric only. Clean restrooms with flush toilets and showers.  
Two picnic shelters, canoeing, fishing, picnic, playground, ice fishing, horseshoe pits, 2 softball diamonds. Large outdoor shelter on the Island that can be rented for family reunions, outdoor events, etc. Contact city clerk at number above.  
Hiking, snowmobile trail and a walking trail a little over a mile.

## Stephen

### Campgrounds/Resorts

#### Valley Court RV Park 218-686-8470

8 open lots available for RVs. Utilities are billed through the city.

# Camping and Resorts

## City Parks/Picnic/Camping

### Northwest Acres Campground

218-478-3614

708 Lincoln Ave.

Trailer/Camper hookups - electrical, water and sewer. Cable TV and internet available. Bathrooms, showers, and handicap accessible.

Playground equipment, pool, picnicking, grills, ball field, laundry facilities, river nearby, & golf course a block away. Restaurant & snacks close by.

## Strathcona

### City Parks/Picnic/Camping

### Strathcona City Park

218-781-2242

Hwy 32 South, 1 block south of Cenex

Outdoor bathrooms, electrical and water hook-ups.

Playground. Snacks and groceries right across the street.

Trails in and out of town - gas and food available.

## Thief River Falls

### Campgrounds/Resorts

### Fall's Stay and Play

218-681-7066

17107 Hwy 59 N

[fallsstaynplay@gmail.com](mailto:fallsstaynplay@gmail.com)

<http://fallsstaynplaytrf.com/>

75 Full hook-up camping sites.

18 hole mini golf course, Arcade, playground equipment and Go-Kart Track.

### City Parks/Picnic/Camping

### Thief River Falls Tourist Park

218-684-1020

South on Hwy 32 and Oakland Park Rd

16 full hookups, 56 electrical only, unlimited tent sites, showers, flush toilets, sewer hook-ups, cable hook-ups, and nearby dump station. Seasonal camping.

Overlooking the lower Red Lake River and Hartz Park. Playground, sand volleyball, canoe landing, fishing, & RiverWalk. Groceries, fine dining, & fast food within walking distance.

## Warren

### City Parks/Picnic/Camping

### Holiday Park and Campground

218-745-5343

8th St. N., Northeast corner of town.

Campground, electrical hookups, sewer and water hookups, flush toilets, showers, and dump station.

Extensive playground equipment, swimming pool, baseball/softball, tennis courts, volleyball, basketball, frisbee golf, horseshoe, golf, picnicking, snacks, and groceries. Near golf course and fairgrounds.

## Warroad

### Campgrounds/Resorts

### Bemis Hill Campground

218-425-7504

Northwest corner of Beltrami Island State Forest.

6 drive-in & 4 horse sites. Campground is open in fall/winter.

Picnic area and shelter. Sledding in winter. Bemis Hill Campground has two campsites and four horse campsites. All are considered "primitive," designed to furnish only the basic needs of the camper. Campsites consist of a cleared area, fire ring, and table. In addition, vault toilets, garbage cans, and drinking water is available.

Hiking, horseback riding trails, skiing, skiing tours, snowmobiling trails, and snowshoeing.

### Beste's Sandy Pine's Campground

218-684-5372

18742 110th Ave NW, 2 miles west of Warroad on Hwy. 11, then south on 570th Ave.

<http://www.dbeste.webs.com/>

Full RV hookups in the summer and electrical metered rates for wintertime use. Open year round to allow for wintertime use of icehouses or campers to be used as a base camp for fisherman.

Wilderness campground located in the forests of Northern Minnesota. We will provide high quality customer service and a safe, scenic, friendly destination for guests to come and enjoy the beauty of nature and the fun of outdoor sport and recreation.

### Birch Ridge RV Campground

218-686-0255

34352 Pine Ridge Road, 2 miles west of Warroad on Highway 11, then south on 570th Ave.

<http://www.birchridgecampground.com/>

Well-groomed, quiet campground with 25 spacious sites with full hook-ups nestled in beautiful birch & pine trees. 5 no hook-up sites as well as tenting sites available.

Includes a central picnic area, playground, clean handicapped accessible restroom, boat parking, horseshoes, four wheeling, and other outdoor activities. Come in after a successful day of fishing and make new friends during our campground picnic dinners or join us on our fall four-wheeling adventures.

### City Parks/Picnic/Camping

### Warroad City Park

218-386-1004 or  
218-386-1454

RV/Camping with electrical, water and sewer hook-ups, showers, flush toilets, dump station.

Public boat access, ample parking, fishing pier and heated fish cleaning houses make Warroad Point Park a terrific home base for fishermen. The park also offers newly constructed playground equipment, picnic shelters, campground and an outdoor swimming pool. Nature viewing from Warroad City Park's observation tower and drive-up nature viewing area offer a terrific opportunity for bird watching as the park is the first stop on the Pine to Prairie Birding Trail. Casino gaming, shopping, and lakeshore dining are within a block or two of the park. Park also features volleyball and mini golf. Paved walking/biking path.



# Camping and Resorts

## Outfitters/Bait Shops

### Rich's Ice Fishing

218-821-6464

<http://richsicefishing.com/>

Well insulated sleeper houses with indoor toilet facilities. Heat, lights, cooking stove, bait, and bunks.

## Private Campgrounds/Resorts

### Springsteel Resort & Marina

800-605-1001

38004 Beach St., SW corner of Lake of the Woods, 4 miles N and E of Warroad.

[steel@mncable.net](mailto:steel@mncable.net)

<http://www.springsteelresort.net/>

\* Open year round

Modern cabins and camping, water and electric hook-ups, flush toilets, and showers.

Boat landing, boat rentals, boat gas, bait, fishing, guided launch service, full service marina, snacks, conference room at lodge, seating for 300, and game room. Catering service available.

### Warroad Estates Marina

218-386-2200

156 Lakeview Drive, Adjacent to the Golf Course

[www.warroadestatesmarina.com](http://www.warroadestatesmarina.com)

Lakeside RV Park and Campground located next to the Marina. Water, sewer and electrical hook-ups. Contact 218-760-7318.

Sheltered harbor, located on Lake of the Woods, ship store, new and used boat sales & service, parts and accessories, two new bedroom condos with seasonal renting.



## Winger

### City Parks/Picnic/Camping

### Winger Depot Park

218-938-4150

On Highway 59

Primitive Camping with electrical hookups.





# Motels and Bed 'n' Breakfast

## Ada

**Norman Motel** 218-784-3781 or 800-750-3149  
502 W. Thorpe Ave  
Highway 200 West  
RV & Truck Parking, and hookups.  
Fifteen rooms, cable television, HBO, wireless Internet, major credit cards accepted, and air conditioning.

## Badger

**Badger Motel** 218-528-3745  
1009 Highway 11 S  
Economy rates, free coffee, flexible check-out times, pets welcome, quiet atmosphere, friendly service, and picnic area.

## Crookston

**AmericInn & Suites** 218-281-7800 or 800-634-3444  
1821 University Ave.  
Hwy. 2 & 75 North  
crookston.mn@americinn.com  
www.americinn.com/hotels/mn/crookston  
50 rooms and suites, including 12 new suites. Indoor pool, whirlpool, and complimentary breakfast buffet.

**Crookston Inn** 218-470-1000  
2200 University Avenue  
Highway 2 and 75 North  
http://crookstoninn.com/  
70 sleeping rooms, indoor pool, banquet facilities and Scobey's Pub & Grub Bar & Lounge.

**Golf Terrace Motel** 218-281-2626  
1731 University Ave  
Hwy. 2 & 75 North  
17 units, restaurants nearby, HBO, and accepts all major credit cards.

**The Cobblestone Hotel & Suites** 218-470-1111 or 888-693-8262  
2304 Sahlstrom Dr.  
crookston@staycobblestone.com  
www.staycobblestone.com  
44 rooms, meeting room, indoor pool, workout room, and complimentary breakfast.

## East Grand Forks

**East Grand Inn** 218-773-9822 or 888-904-8840  
606 Gateway Dr.  
Hwy. 2 East  
60 units, cable TV, free breakfast, internet, outside plug-ins, major credit cards accepted, and pets o.k.

**Fairfield Inn & Suites by Marriott** 218-399-3030 or 888-236-2427  
514 Gateway Dr.

https://www.marriott.com/  
67 rooms, continental breakfast, in-room coffee, pool laundry, whirlpool/hot tub, whirlpool suites, microwave, refrigerator, exercise room, handicap rooms, high speed internet, wireless internet.

**Plaza Motel** 218-773-1179 or 800-773-1127  
309 DeMers Ave.

24 units, cable TV, HBO, outside plug-ins, major credit cards accepted, non-smoking rooms available, and fridge and microwave in rooms.

## Fosston

**Amanda House Bed & Breakfast** 218-435-1523  
203 3rd St NE

**Super 8** 218-435-1088  
108 S. Amber

Hwy 2 East  
http://www.super8.com  
\* Variable, call ahead

## Greenbush

**Emerald Lodge** 218-782-2990  
236 Highway 32 South  
10 units, with 10 electric RV hook ups, wireless internet, fridge & microwave in each room.

## Gryla

**Gryla Motel 89** 218-294-6158  
231 E. State St.  
Corner State Hwy 89 and County 54  
Newly remodeled under new ownership! Open all year. 6 motel units, 1 four bedroom apartment style unit, cable, and free Wi-Fi. Relax in our new lodge and patio. All major credit cards accepted.

## Hallock

**Scandinavia Airnb** 218-843-2813  
28 2nd St SE  
This Airbnb space is an entire apartment, about 1,300 sq feet, on the upper level of an historic bank and jewelry store building. The ground level is a creative coffee shop (think pour over coffee and espresso drinks) that serves light breakfasts and lunches. The apartment has much of the character of the original 100 year old building, but with modern upgrades and can house 7 people.

## Motels and Bed 'n' Breakfast

---

### Budget Host Caribou Inn

218-843-3702

203 E. Broadway

<http://www.budgethost.com/>

25 Rooms, continental breakfast, wireless internet, and cable television with HBO.

---

### Gateway Motel

218-843-2032

702 S. Atlantic Ave.

Cable TV, and reasonable rates.

---

## Karlstad

---

### North Star Motor Inn

218-436-2494

305 Main St. S

3 blocks south of the intersection of Hwy's 11 & 59, on Hwy 59.

Wireless Internet, Newly remodeled rooms, micro-coffee pot, and refrigerator.

---

## Oklee

---

### Oklee Inn

218-796-5003

306 Toupin St

<https://www.okleeinn.com/>

Furnished bedroom and living room with all utilities included. Every bedroom has a 32 inch TV and the main living room has a 50 inch Smart TV w/ WIFI. Coin operated laundry and laundry service will be offered.

---

## Red Lake Falls

---

### Chateau Motel & Liquor

218-253-4144

Hwy. 32 N.

<http://www.chateaurlf.com/>

16 Units, color cable TV, major credit cards accepted, and off-sale attached.

---

## Roseau

---

### AmericInn Lodge and Suites

218-463-1045 or  
800-634-3444

Highway 11 West

[roseau.mn@americinn.com](mailto:roseau.mn@americinn.com)

[www.americinn.com](http://www.americinn.com)

51 rooms, 2 room suites w/fireplace and whirlpool, color cable TV, fax service on local number, 2 line phones with fast Internet, whirlpool, pool, exercise room, free continental breakfast, guest laundry, truck parking, and RV park. All major credit cards accepted.

---

### North Country Inn & Suites

218-463-9444 or  
888-300-2196

902 3rd St. NW

On State Hwy 11

---

### Roseau Motel

218-463-2196

806 3rd. St. NW

State Hwy. 11

47 Units, meeting rooms, all major credit cards accepted, Cable TV, HBO, and attached restaurant. Senior discounts.

---

## Thief River Falls

---

### Americas Best Value Inn & Suites

218-681-6205

1915 Hwy 59 SE

<http://www.americasbestvalueinns.com>

1 Floor-45 rooms, new indoor pool, spa, meeting room, spa suites, free hot breakfast, cable TV, local calls free, free high speed wireless internet, large vehicle parking, and next door to restaurant/lounge.

---

### AmericInn Lodge and Suites

218-681-4411

1920 Hwy 59 SE

[www.americinn.com](http://www.americinn.com)

49 rooms and suites available. Indoor pool, whirlpool, complimentary enhanced continental breakfast, exercise room, meeting room, free high-speed internet access, and large vehicle parking available.

---

### Cedar Lodge

218-681-6800

1010 North Main Ave.

<http://www.cedarlodgetrfmn.com/>

We offer reasonable rates and comfortable accommodations. Microwaves, coffeemaker and refrigerators in rooms. Pets allowed.

---

### C'mon Inn

218-681-3000

1586 Highway 59 Southeast

<http://www.cmoninn.com/>

44 rooms, indoor pool, mini suites with jacuzzi, meeting room, cable TV, free continental breakfast, and frequent stayer program.

---

### Custom Stay

218-681-2720

1510 Highway 59 SE

Intersection of 1st. St. and Hwy. 59 SE.

Located close to shops and restaurants. Owner operated to give that personal touch. We have reasonably priced rooms and free wireless internet. Refrigerators and microwaves in all rooms.

---

### GrandStay Hotel & Suites

218-681-9988

1031 Wendt Dr.

<http://www.grandstayhospitality.com/>

The GrandStay Hotel & Suites has a host of accommodations and amenities ideal for leisure and business trips. Guests can upgrade to a whirlpool king or one-bedroom suite equipped with a kitchenette, perfect for families and extended stay travelers.

---

### Quality Inn

218-681-7555

1060 Hwy 32 S

<https://www.choicehotels.com/>

# Motels and Bed 'n' Breakfast

## Seven Clans Hotel

800-881-0712

20595 Center Street East

Located 8 miles south on Highway 59.

<http://www.sevenclanscasino.com/>

151 suite hotel with fireplace and jacuzzi rooms. Attached casino, restaurant and waterpark facilities. Family friendly environment, no alcohol allowed.

## Warren

### Elm Crest Motel

218-745-4721

Hwy. 75 N.

Cable TV, all major credit cards accepted, air-conditioning, non-smoking rooms available, direct dial phones, all rooms on ground level, and well-lit parking area.

## Warroad

### Can-Am Inn

218-386-3507 or  
800-280-2626

406 Main Av. NE

<https://canaminn.com/>

Sauna, jacuzzi, exercise room, game room, gift shop, 40 rooms, cable TV, and continental breakfast.

### Doc's Harbor Inn and Rentals

218-452-3302

106 Dale Ave SW

Historic Victorian home built in 1914 on the banks of the Warroad River in Warroad, Mn. 4 bedrooms, 2 shared bathrooms, elegant dining and living rooms with river views. Cable TV in 2 rooms, wireless internet, off street parking. Fireplaces. Right on the snowmobile trail! Non-motorized boat rentals and bike rentals.

### Patch Motel

218-386-2723 or  
800-288-2753

801 State Ave. N

<http://www.patchmotel.com/>

Bar & Lounge, Jacuzzi, 75 Rooms, cable TV. Restaurant offers family dining with lunch and dinner buffets.

### Seven Clans Warroad Hotel

800-815-8293

1012 East Lake St.

<http://www.sevenclanscasino.com/>

60 beautiful hotel rooms and 6 Lakeside Suites! The view of Lake of the Woods will take your breath away! As you relax in your comfortable and cozy room, you will be able to take advantage of our Sonifi Interactive Entertainment System. Start your day off right in our Fitness Room or relax in our deluxe hot tub!

### Super 8

218-386-3723 or  
888-714-5514

909 N. State St.

<http://www.super8.com>

Jacuzzi, cable TV, fax and copier service, 41 rooms, double and single suites, microwave, and refrigerator. Coffee and donuts available 24 hours.



# Multi-purpose Trails

## Major Route

## Pine to Prairie Birding Trail

1-800-433-1888

<http://www.mnbirdtrail.com/>

Throughout all of region

**43 stops available. Kittson county part of trail goes through the Twin Lakes Wildlife Area.**

A unique collection of habitats in Northwestern Minnesota which provide homes for a tremendous variety of birds. Pine forests, deciduous woodlands, native tallgrass prairie, aspen parkland, sand dunes (remnants of Glacial Lake Agassiz), calcareous fens, bogs, marshes, large and small lakes and rivers make up the transition zone that offers over 275 species of birds. Most of the sites are on public land or private reserves open to the public. Map of area is included on the website or call 800-328-4455 for a birding guide.

## Major Route

## Red River/Pembina Oxcart Trail

**The trail does not follow current highways but runs diagonally from Pembina, ND to Mahanomen then to St. Paul.**

This historic trail can still be seen throughout much of the region. This trail was used by the first settlers as a trading corridor connecting St. Paul to rural Minnesota.

## Major Route

## Waters of the Dancing Sky Scenic Byway

<http://watersofdancingsky.com/>

**Drive the scenic byway from International Falls to North Dakota.**

Named for the Northern Lights that can often be seen dancing in the sky, this is Minnesota's northernmost byway. This breathtaking route traverses 191 miles along Minnesota Trunk Highway 11 through lakes, forests, farmland and several cities/towns.

## Major Routes

## King of Trails Scenic Byway

[www.highway75.com](http://www.highway75.com)

**Drive U.S. Highway 75 the King of Trails from Canada to Mexico.**

This trail was previously utilized by Native Americans/settlers and was designated by the State of Minnesota as "The Historic King of Trails" in 2001. Efforts include an annual marketplace day where communities along Hwy. 75 invite vendors to openly market their goods at select locations.

## Major Routes

## Minnesota Wildflower Route

**Wildflower route along Hwy 11 from Greenbush to Baudette. The route contains up to an estimated 800,000 showy pink ladyslippers, the protected state flower of Minnesota.**

An annual "Wildflower Route Celebration" is related to this route.

## Major Routes

## Prairie Passage Trail

**This trail follows Hwy 75 to Crookston then goes down Hwy 102 to connect with Hwy 32 in Fertile traveling south.**

This trail represents remnants of native grasses in six states and Canada. Native plantings are encouraged to restore the original landscape. The Prairie Passage has been described as a "window to the past." and "a place to get a sense of what this part of Minnesota used to be like."

## Major Routes

## Red Lake River Corridor

[www.redlakerivercorridor.org](http://www.redlakerivercorridor.org)

**Because of its unique setting and character, the Red Lake River is one of a few officially designated DNR canoe and small boat routes in the region.**

The Red Lake River originates in the marshes of the Lower Red Lake and meanders west almost 200 miles before emptying into the Red River at East Grand Forks. It passes through three continental biomes, farmland, prairie, riparian forests, and bluffs. Fish populations include channel catfish, northern pike, and walleye. Campsites are designated along the route. Public rest areas are available along the route to picnic, rest, and explore.

## Major Routes

## Red River Corridor

<http://www.dnr.state.mn.us/watertrails/index.html>

**The Red River of the North is designated as an official canoe and boating route. The designated portion of the river is 394 miles long from Breckenridge to the US/Canadian border.**

The Red River meanders 550 miles northward from its source in Breckenridge, MN to Lake Winnipeg in Canada. The Red River is known for its catfish and walleye populations. The Red River flows through the Red River Valley, one of the world's flattest landscapes and a remnant of glacial Lake Agassiz.

Access sites and camping areas are limited. They may be too far apart for certain trip lengths.

## Ada

## Ada Area Recreation Trail

218-784-5520

**Approximately 2 miles paved trail loop at West side of Norman County Fairgrounds and along West, North and East perimeters of Ada Elementary School grounds. For walking, biking and rollerblading.**

## Ada

## Ada Cross County Ski Trail

**Enjoy free use of over three miles of ski trails! In addition, equipment rental only requires some form of ID as skis are available in all sizes at no cost. Contact the Dekko Center, 218-784-7665 for more information.**

## Argyle

## Old Mill State Park

33489 240th Ave. NW

<http://www.dnr.state.mn.us/>

17 mi. NE of Warren, or 13 miles E of Argyle or 11 miles W of Newfolden on County Road 4.

\* State Park fees

**Biking, 7 miles of cross-country skiing and hiking trails, Snowshoeing, and 3.5 Miles of groomed trails, warming house with electricity and fireplace. The park's trails run through prairie, wooded river valley and pine areas.**

*7 miles of groomed trails*

Summer Nature Interpretation, enclosed picnic shelter, swimming, canoeing, fishing, volleyball, horseshoe pit, and playground. Historical sites include a flour grinding mill. Suspension bridges and Sliding Hill in the park.

Modern camping with showers, flush toilets, 10 electric & water hookups, primitive camping, and 1 group campsite.

## Crookston

## Burnham Creek Wildlife Management Area

218-281-6063

<http://www.mnbirdtrail.com/hotspots/burnham.htm>

## Pine to Prairie Birding Trail

1,460 acres of prairies and a wetland impoundment. Large concentrations of sandhill cranes are likely in April. Area closed to the public during September and October (waterfowl refuge). Best times to visit are from April through August.



# Multi-purpose Trails

## Crookston

## Chicog Wildlife Management Area

218-281-6063

<http://www.dnr.state.mn.us/wmas/index.html>

11 miles SE of Crookston on MN Hwy. 102 to Melvin; 1 mile S on township rd.

1,624 acre example of some of Minnesota's remaining mesic prairie. Winter opportunities include exploration by snowshoe and cross-country skiing. Spring and fall brings migrating cranes.

## Crookston

## Glacial Ridge National Wildlife Refuge

218-687-2229

[www.nature.org](http://www.nature.org)

10 miles east of Crookston on Hwy 2.

More than 24,000 acres. Established Oct. 12, 2004 as the 545th National Wildlife Refuge. The Nature Conservancy's largest prairie-wetland restoration project in U.S. history. Prairie chicken blinds available, please call for reservations. Habitat for moose, gray wolf, waterfowl, prairie chickens and other upland game birds, and a host of other prairie species.

## East Grand

## Eagle Point Trailhead

### Forks

Power, shelter, grills, picnic tables, access to Greenway trail. Near soccer fields and playground.

## East Grand Forks

## Lafave Park

701-746-0444

Central Ave NW and Demers to 2nd Ave NE EGF

Boat Launch, fishing, trails, softball, and football fields.

## East Grand Forks

## Red River State Recreation Area

515 2nd St. NW

866-857-2757

<http://www.dnr.state.mn.us/>

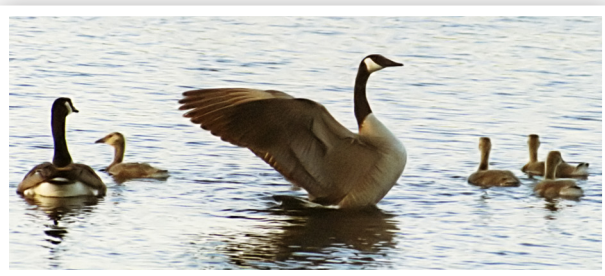
1 block north of Cabela's in East Grand Forks.

**5 miles of paved hiking/biking trail & 2 mile cross country ski trail.**

*Connected to one-way route out of city; No snowmobiling off marked trails.*

This 1,200-acre state recreation area came about as a result of housing removal after the flood of 1997. Located near the area: groceries, ice, snacks, golf course, & laundry. Swimming pool, picnic area, playground, fishing, tackle, live bait, camping gear, gas, & boat ramp. Partially encompassed in the GF/EGF Greenway.

113 campsites, including 85 electric sites with full hookups, plus shower & bath facilities located next to downtown East Grand Forks. Electrical, sewer, and water hookups, dump station nearby, and flush toilets. Modern restrooms are open May - Sept.



## East Grand Forks

## The Greenway

701-787-3756

<http://www.greenwayggf.com/>

Along the Red River in Grand Forks and East Grand Forks

**An asphalt trail system covers over 20 miles.**

Consists of 2,200 acres lining the Red River & Red Lake River, flowing through Greater Grand Forks. This picturesque urban space offers countless recreational, cultural, historical & natural resource opportunities. You can hike, walk, inline skate, bike, cross-country ski, bird, canoe, fish, golf & much more in the heart of our two cities.

## Erskine

## Rydell National Wildlife Refuge

17788 349th St. SE

218-687-2229

[Rydell@fws.gov](mailto:Rydell@fws.gov)

2.5 Miles W. of Erskine on Highway 2, 2.5 miles S. on Highway 210

**7 miles of trails.**

2,120 acre refuge established in 1992. Includes a visitor center with bookstore, wildlife observation and photography, hiking, snowshoeing, crosscountry skiing, fishing, hunting and environmental education.

## Fertile

## Agassiz Dunes

218-574-2622

<http://www.dnr.state.mn.us/snas/index.html>

1 mile south and 1 mile east of Fertile.

**Hiking Trails allow a close view of the area.**

Preserved remnant of the sand dunes that northwest winds pushed up on the eastern beaches of glacial Lake Agassiz. Operated by the Nature Conservancy.

## Fertile

## Agassiz Environmental Learning Center

400 W. Summit Ave.

218-945-3129

<http://aelcfertile.org/>

**Ten miles of hiking and cross country ski trails along the Sand Hill River and through the Fertile Sand Hills.**

Picnic area and modern washrooms. Primitive Camping with flush toilets and showers. Ten miles of hiking and cross country ski trails along the Sand Hill River and through the Fertile Sand Hills.

Primitive camping with flush toilets and showers.

## Fertile

## Sand Hill Safari Tours

218-945-3136

Located at the Nature Center

Safari van tours of the Sand Hills are available during the summer and early fall months only. Enjoy a narrated trip around the perimeter of the 640 acre Sand Hills wilderness area.

## Greenbush

## Blooming Valley Outfitters

218-782-BEAR

[lemery@wiktel.com](mailto:lemery@wiktel.com)

[www.bloomingvalleyoutfitters.com](http://www.bloomingvalleyoutfitters.com)

Located 23 Miles North of Greenbush, MN 23632 220th St.

**Snowmobiling, four-wheeling, horseback riding, cross country skiing & fishing are all available. Close to groomed snowmobile trails & many backwoods trails for four-wheelers.**

Full service guide for bear, deer, waterfowl and varmint hunts.

Cabins/tent sites available with full meal service included on hunts.



# Multi-purpose Trails

---

**Greenbush**                      **IS Folland Welcome Park**  
218-782-2570  
Picnic shelter, restrooms, playground, hiking, cross country skiing, sledding hill, biking trail, zip line, and grills.

---

**Greenbush**                      **Wojo's Arena**  
23162 220th St.  
218-782-3751  
dana@wojoshorsetraining.com  
http://www.wojoshorsetraining.com/  
Outdoor horse area. Activities include team roping, game days, horse training, trail riding, and other horse related events.

---

**Grygla**                      **Fourtown-Grygla Trail**  
http://www.dnr.state.mn.us/  
**170 Miles of trail stretched throughout Northwestern Minnesota. Much of this trail system follows county/township roads, ditch banks and existing trails. County ordinances allow ATVs to operate on the far right side of the travel lane. Open 6/1 to 10/31.**

---

**Grygla**                      **Klein Memorial Park**  
218-294-6292  
**Hiking trail along Mud River.**  
*Snowmobile trail passes thru park area.*  
Picnic shelter, softball fields, playground, tennis court, basketball court, and horseshoe pits.

---

**Karlstad**                      **Twin Lakes State Wildlife Management Area (WMA)**  
218-436-2427  
Contact: DNR, Karlstad, MN  
http://www.dnr.state.mn.us/wmas/index.html  
4 miles NE, SH 11.  
*A groomed snowmobile trail runs through the WMA.*  
8,200 Acres. Recreation includes hiking, snow shoeing, cross country skiing, berry picking, canoeing & wildlife viewing. Water access is available at several locations adjacent to the marshes. There is a viewing platform located off Hwy. 11 that is wheelchair accessible. Contains a 1,200 acre waterfowl sanctuary. No trespass or hunting is allowed in the sanctuary during Sept & Oct.  
Camping is permitted at 7 signed sites.

---

**Karlstad**                      **Wallace C Dayton Conservation & Wildlife Area**  
218-436-3455  
http://www.mnbirdtrail.com/hotspots/dayton.htm  
**Pine to Prairie Birding Trail**  
12,600 acres of aspen parkland habitat are preserved, & is an intact remnant of a vast dynamic landscape. Moose, elk, wolves & bear can be seen here. Best times to visit are from April-Oct.

---

**Lake Bronson**                      **Lake Bronson State Park**  
3793 230th St  
218-754-2200  
https://www.dnr.state.mn.us/  
Lake Bronson State Park is connected to the Two Rivers and offers many outdoor activities including; swimming, boating, canoeing, hiking, fishing, mushroom hunting and camping. There are trails and a swimming beach. In winter, snowmobilers, cross country skiers and snowshoers enjoy the park's network of trails and through varying vegetation and terrain. The park has an observation tower that was built as a part of the WPA (War Powers Act).  
3 campgrounds with 152 sites. 6 pull through sites, 67 with electricity. Campsite offers showers, flush toilets and dump station.

---

---

**Lancaster**                      **Lancaster Park**  
218-762-6472  
State Highway 59 North  
**8 mi. of walking trails, biking, and hiking. 7 mi. of groomed intermediate cross country ski trails. Scenic setting along the river & wooded areas. Snowmobiling & snowshoeing.**  
287 acres, playground, summer nature interpretation, picnicking, golf, and cross country skiing. Groceries and restaurant close by.  
28 camp units, electric hookups, showers, flush toilets, and a dump station.

---

**Lancaster**                      **Nature Trail**  
218-762-4205  
**8 miles of walking trails, biking, and hiking. 7 miles of groomed intermediate cross country ski trails. Very scenic setting along the river and wooded areas. Birding trails. Snowmobiling and snowshoeing.**

---

**Lancaster**                      **Wilebski's Bird Sanctuary**  
218-762-4205  
www.wiktel.net/birdsanctuary  
7 miles north on Hwy 59, 1 mile west  
**3 miles of birding trails.**

---

**Middle River**                      **Agassiz National Wildlife Refuge**  
22996 290th St. NE  
218-449-4115  
Contact: Refuge Manager  
Agassiz@fws.gov  
http://www.fws.gov/refuge/agassiz/  
From Thief River Falls go 12 miles North on MN Hwy 32, then 11 miles East on Marshall County Road 7 to Agassiz Headquarters.  
\* See below  
**One of 45 sites along the MN Pine to Prairie Birding Trail. Three hiking trails-one wheelchair accessible at Headquarters (trail brochures available) & at Rodahl Trail. The 4-mile Lost Bay Habitat Drive open during the ice free months.**  
Explore the refuge offering 61,500 acres of diverse bird, wildlife, and plant life. Over 295 bird and 49 mammal species have been observed rightfully making it one of the 50 best places to observe wildlife and one of the 100 best places to observe birds according to the National Wildlife Foundation. Nice general brochure, bird checklist, and mammal list available. Wildlife displays and Agassiz bookshop open Mon.-Fr. 7:30 am - 4 pm, excluding Federal holidays. Sunday afternoons from 1-5pm in June. Firearm & archery deer hunting open with regular firearm season. Ruffed & sharp-tailed grouse hunting begins with the opening of regular deer firearm season. Muzzleloader deer season, youth waterfowl & youth deer hunting is open during the appropriate season.  
Primitive camping allowed in designated areas on adjacent MNDNR wildlife lands.

---

**Middle River**                      **Agassiz Wildlife Refuge Tour**  
22996 290th St. NE  
218-449-4115  
Agassiz@fws.gov  
http://www.fws.gov/refuge/agassiz/  
12 mi N of Thief River Falls on Hwy 32, then 11 mi E on Marshall County Rd 7.  
\* Daylight Hours  
"Lost Bay Drive" a four mile long self-guided auto drive, 100 foot observation tower, and a 14 foot observation deck with sightings of a variety of animal and plant life. University classes and other groups may be given talks and tours if arrangements are made in advance.

---

# Multi-purpose Trails

## Middle River

Contact: DNR, Thief Lake  
Headquarters

<http://www.dnr.state.mn.us/wmas/index.html>

55,000 acres of wildlife habitat, including marshes, forests, brushlands, and prairie. Wildlife present seasonally include waterfowl and other marsh birds, deer, moose, bear, grouse, rabbits, furbearers, songbirds, sandhill cranes, and raptors. Activities include hunting for waterfowl, big and small game, and nature viewing. A scenic overview of the lake with interpretive signing and picnic shelter are available. Contact the headquarters for maps and bird lists.

Primitive camping in designated areas.

## Thief Lake Wildlife Management Area

42280 240th Ave. NE  
218-222-3747

## Nielsenville

## FireFrost ATV Club

612-703-2612

Multi - use Trail located in Western Polk and Norman Counties. The Trail runs from Nielsenville to Perley MN

## Red Lake Falls

## Bottineau Trail

Contact: City Hall 218-253-2684

**The trail extends North and South. It is the product of the old railroad bed that was abandoned. Walking/biking in the summer, snowmobiling/skiing in the winter. Approximately 3.2 miles long, connecting with various roads.**

## Red Lake Falls

## Old Crossing Treaty Park

218-253-2684

At Huot between Crookston and Red Lake Falls.

**Adjacent to the park is a DNR Wildlife Management Area where hiking and wildlife watching opportunities exist.**

This park was the site of an 1863 treaty between the U.S. government and Red Lake/Pembina Ojibwe. Oxcart traffic also favored the area. Historical park and historical interpretations in summer and fall. Boat landing, water, fishing, playground.

Pristine riverside, natural hardwoods, excellent walking, biking, swimming, tubing, boating & canoeing with public access to the Red Lake and Black Rivers. Water, power, & outdoor restrooms support all phases of free camping & day use. Superb family site.

## Red Lake Falls

## Sportsman's Park

Contact: City Administrator 218-253-2684  
[redlakefalls.com](http://redlakefalls.com)

At the junction of the Red Lake & Clearwater Rivers.

**Hiking, and cross country ski trails.**

Plenty of space for picnics and outings. Boat landing and fishing.

Primitive campsites for tents with indoor toilets/showers. RV camping, 7 water/electrical hook-ups & 10 water/electric/sewer hook-ups. Make online reservations for camping at [redlakefalls.com](http://redlakefalls.com)

## Roosevelt

## Norris Camp

PO Box 100  
218-783-6861

South of Roosevelt in Beltrami Island State Forest.

**An excellent stop for bird watchers along the Pine to Prairie Birding Trail.**

Headquarters of the Red Lake Wildlife Management Area. One of the last Civilian Conservation Corps (CCC) and Resettlement Administration (RA) camps in the nation in operational condition. Listed as a historic place on the National Register. Museum on site

## Roseau

## East Diverson Greenway/ATV Terrain Park

Directly East of the Roseau City Park on the north side of the Co Rd 24 bridge.

Nearly 1,000 acres of greenway along the Roseau River Flood Diversion project. This area provides a natural area for plants and wildlife as well as recreation. One feature of the greenway is a 4.5 mile paved non-motorized recreational trail running the full length of the Diversion, starting as Roseau City Park. Additionally there are designated ATV trails and an ATV terrain park incorporated into the greenway space. Another feature constructed by a local bike club is nearly 13 miles of single track mountain bike trails in and around large spoils piles from the diversion construction, dubbed Mt. Roseau.

## Roseau

## Hayes Lake State Park

48990 County Road 4  
218-425-7504

<http://www.dnr.state.mn.us/>

15 mi. S of Roseau on State Hwy 89, then 9 mi. E on County Rd 4.

**5 miles of biking, 13 miles of hiking and 7 miles of horseback riding trails. 6 miles of groomed ski trails. 2.5 mile self guided trail. 6 miles of snowmobiling trails, and snowshoeing. Trails are located in pine forest on the edge of the lake.**

*Connects with Beltrami Island Trail. Food and gas available one mile from park.*

Northwoods pine forest in remote lake setting. Man made lake popular for canoeing, fishing and swimming. Boat landing, Summer Nature Interpretation, playground, and picnic shelter. Bald Eagles, Gray Jay, Spruce Grouse, Winter Finches on 3,000 acres of Park.

18 electric sites, 35 semi-modern campsites, flush toilets, dump station, showers. Two camping cabins, two backpack sites, and one group camp. There are two handicapped sites.

## Roseau

## Oak Crest Golf Course

5th St. S  
218-463-3016

[www.oakcrestgolfcourse.com](http://www.oakcrestgolfcourse.com)

**Two multi-purpose trails are groomed around the golf course.**

Public course, 18 holes, par 71, grass greens, club and cart rental, pro-shop, club house, and driving range. Located along the Roseau River.

## Roseau

## River View Park

218-242-0063

3rd Ave. NE, across the Roseau River

Gazebo, benches, trails, gardens, veterans, and a public safety memorial. Stands as a testament to all of the County residents that have fought in four wars as defenders of peace and freedom, and in doing so made the supreme sacrifice.

## Roseau

## Roseau City Park

11th Ave SE along the Roseau River

Boat and kayak launch, fishing pier, playground, shuffle board, horseshoes, sand volleyball, disc golf, walking & biking trails, picnic shelters and indoor shelter to rent, BBQ pits, fire rings and bathrooms. 10 RV sites with water and electric hook-ups, 10 primitive tent sites. Includes showers and bathrooms and dump station.

# Multi-purpose Trails

## Roseau

### Roseau River Wildlife Management Area

27952 400th St.  
218-463-1130

<http://www.dnr.state.mn.us/wmas/index.html>

Located in NW Roseau County, 8 mi. N of Badger

**Dikes open to hiking and snowmobiling.**

*Snowmobiling legal on WMA outside of sanctuaries. No groomed trails on the WMA.*

62,000 acre area with several thousand acres of other public land adjoining. The unit is low and flat, part of the glacial Lake Agassiz lake plain. The Roseau River flows west for 14 miles through the unit. 3 impoundments totaling 10,600 acres have been constructed. These wetlands are managed for resident and migratory waterfowl, other wetland wildlife species, public hunting, & other recreational pursuits as well as flood control. There are 3 sanctuaries totaling 7,000 acres which provide feed, resting, & breeding areas. This WMA is uniquely large & diverse. Hunting, fishing & birdwatching are popular pursuits on the WMA.

Primitive camping.

## St. Hilaire

### St. Hilaire City Park

218-964-5257

Right off of Hwy. 32, in town.

**Hiking, snowmobile trail and a walking trail a little over a mile.**

Two picnic shelters, canoeing, fishing, picnic, playground, ice fishing, horseshoe pits, 2 softball diamonds. Large outdoor shelter on the Island that can be rented for family reunions, outdoor events, etc. Contact city clerk at number above.

30 sites with electric, water and sewer hookups. Five additional sites with electric only. Clean restrooms with flush toilets and showers.

## Stephen

### Marshall County Park of Florian

218-478-3658

10 mi. East of Stephen, MN on Co. Hwy. 6

**Skiing and country snowmobiling, snowshoeing. 2 mile bike trail (walking, roller blading) that is handicapped accessible.**

Boat launch, fishing, sailing, canoeing, paddle boat rental, swimming, lifeguards, spiral slide, picnicking, playground, golf, basketball, backboards, volleyball, ball fields, ice fishing, snacks, and food stands.

Electrical/water hook-up, showers, flush toilets, and dump station.

## Strathcona

### Strathcona City Park

218-781-2242

Hwy 32 South, 1 block south of Cenex

**Trails in and out of town - gas and food available.**

Playground. Snacks and groceries right across the street.

Outdoor bathrooms, electrical and water hook-ups.

## Thief River Falls

### Oakland Park

218-681-2519

At the end of Baken St.

**Walking trail**

Picnic tables and shelters, electricity, water, bathroom facility, swingsets, horseshoe pits, volleyball area, softball field, canoe landing, and parking lot.

## Thief River Falls

### RiverWalk

218-681-2519

**7.3 miles of walking, biking, and cross country ski trail through town along the Thief and Red Lake Rivers. Passes through 9 parks and 3 forest trails, recreational points, historical areas, and by the Dam. Maps available.**

The RiverWalk pedestrian and bicycle trail takes you through 9 parks and 3 forest trails along the banks of the Red Lake and Thief Rivers. The RiverWalk features 15 pictographs and a number of overlooks identifying points of historical interest throughout the city. A brochure is available.

## Trail

### Trail City Park

218-268-4465

Main Street

**Snowmobile Trail**

*Groomed trail thru area.*

Picnicking with tables and playground.

## Twin Valley

### Agassiz Recreation Trail

<http://www.dnr.state.mn.us/>

Entrance at Heiberg Park East (Twin Valley)

**32 mile trail from Ulen to Twin Valley and Gary to Fertile. The trail consists of two 10 foot treadways. In the winter, the upper treadway will be for snowmobiling. The lower treadway will be for snowshoeing, cross country skiing and dog sledding.**

ATV use is permitted from April 1 to November 30. Free ski rental available at Buckle's Hardware.

## Twin Valley

### Twin Valley Riders Club

<http://twinvalleyridersclub.com/>

**There is a trail that joins to the Agassiz Recreational Trail, as well as many river trails.**

The Twin Valley Riders Club Arena is set up for horse shows, roping, ranch rodeos and team penning/sorting. "Fun Days" horse events every third Sunday in May through August. Trail rides occur from May to October.

Free primitive camping near Twin Valley Riders Club Equestrian Park. Flush toilets available.

## Warren

### Agassiz Audubon Society

27391 190th St. NW

Experience wildlife at the beach along Glacial Lake Agassiz. To the west are the Tallgrass Prairies - to the east, the Aspen Parklands. The Audubon Center has them both. It's a great place to spot magpies & kingfishers, warblers and owls as well as the occasional otter, moose, bear, and wolf. Bring a picnic lunch and spend the day. Experience the quiet serenity of the pine groves, prairie vistas and aspen woodlands. There's plenty to see. While you're here, take a walk across the street to the Agassiz Valley flood control impoundment - one of the best birding locations in NW MN. Look for white pelicans, common loons, sandhill cranes, great blue herons, shorebirds and waterfowl. The Agassiz Valley Residential Pollinator Garden is available for you to visit, which showcases natural habitat plants, forbes, and trees. Agassiz Valley is closed during the winter months.



## Multi-purpose Trails

### Warroad

### Beltrami Island State Forest

1-800-382-3474 or 218-386-1304

<https://www.dnr.state.mn.us/>

20 Miles SE of Roseau

**Hiking, Pine to Prairie Birding trail, horseback riding trails, cross country ski trails, and 138 miles of snowmobile trails. Off-road vehicles (ATVs, etc...) are allowed on all trails unless posted otherwise.**

669,000 acres in Roseau, Lake of The Woods, & Beltrami Counties. Canoeing, fishing, hunting, picnicking and birding. This is the second largest state forest. Nearby seasonal blueberry picking at Blueberry Campground near Williams.

Camping at Bemis Hill Campground.

### Warroad

### Bemis Hill Campground

218-425-7504

Northwest corner of Beltrami Island State Forest.

**Hiking, horseback riding trails, skiing, skiing tours, snowmobiling trails, and snowshoeing.**

Picnic area and shelter. Sledding in winter. Bemis Hill Campground has two campsites and four horse campsites. All are considered "primitive," designed to furnish only the basic needs of the camper. Campsites consist of a cleared area, fire ring, and table. In addition, vault toilets, garbage cans, and drinking water is available.

6 drive-in & 4 horse sites. Campground is open in fall/winter.

### Warroad

### Lost River State Forest

<https://www.dnr.state.mn.us/>

South of the Canadian Border on Highway 310

**Hiking and snowmobile trails available**

The Lost River State Forest borders Manitoba, Canada, and is known as a good birdwatching location. Here you will have opportunities to view great gray owls as well as other birds, including spruce grouse; snowy, northern hawk, great gray, and northern saw-whet owls; whip-poor-wills; three-toed and black-backed woodpeckers; yellow-bellied flycatchers; common ravens; boreal chickadees; and magnolia warblers.

### Warroad

### Point Park

218-386-1004

Public boat access, ample parking, fishing pier, and heated fish cleaning houses make Warroad Point Park a terrific home base for fishermen. The park also offers newly constructed playground equipment, picnic shelters, campground, and an outdoor swimming pool.

Nature viewing from Warroad Point Park's observation tower and drive-up nature viewing area offer a terrific opportunity for bird watching as the park is the first stop on the Pine to Prairie Birding Trail. Warroad's paved walking/biking path begins at the park and weaves through the outskirts of town. Casino gaming, shopping, and lakeshore dining are within a block or two of the park.

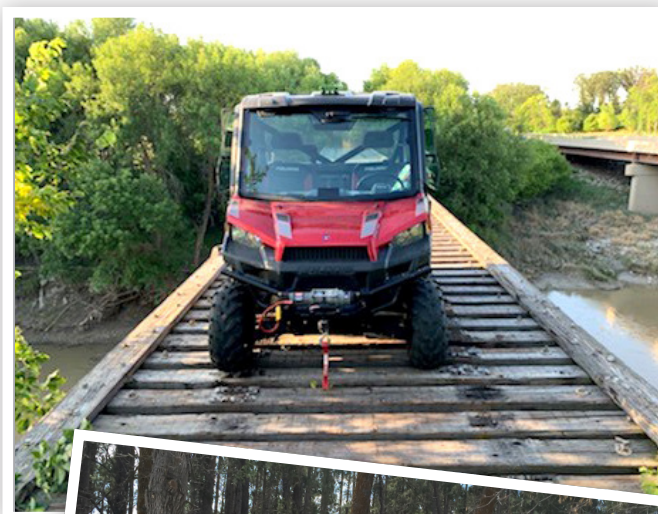
### Warroad

### Warroad City Park

218-386-1004 or 218-386-1454

**Paved walking/biking path.**

Public boat access, ample parking, fishing pier and heated fish cleaning houses make Warroad Point Park a terrific home base for fishermen. The park also offers newly constructed playground equipment, picnic shelters, campground and an outdoor swimming pool. Nature viewing from Warroad City Park's observation tower and drive-up nature viewing area offer a terrific opportunity for bird watching as the park is the first stop on the Pine to Prairie Birding Trail. Casino gaming, shopping, and lakeshore dining are within a block or two of the park. Park also features volleyball and mini golf. RV/Camping with electrical, water and sewer hook-ups, showers, flush toilets, dump station.



## Area Attractions

### Golf Courses

**Ada**                      **Heart of the Valley Golf Course**  
1949 County Highway 35  
218-784-4746

9 holes with a par 37. Grass greens, public course, club, and cart rental available. Course offers men's league night, ladies' morning league, and ladies' night league.

**Crookston**                      **Minakwa Golf Club**  
901 Fisher Ave  
218-281-1773

Private Course, 9 holes with a par 36, grass greens. Clubhouse and cart/club rentals available.

**Crookston**                      **North Fore Tee Driving Range**  
218-281-1774

Fisher Ave., across from Golf Course  
Practice range.

**East Grand Forks**                      **Valley Golf Club**  
2407 River Road NW  
218-773-1207

<http://www.valleygolfegf.com/>

Public course, 18 holes, grass greens, cart and club rental, pro-shop, and clubhouse.

**Erskine**                      **Oak Lake Golf Course**  
23146 347th St. SE  
218-687-4653

[http://www.pioneercarecenter.com/HTML/oak\\_lake.cfm](http://www.pioneercarecenter.com/HTML/oak_lake.cfm)

Public course, 9 holes, grass greens, cart and club rental. Club house and pro shop. League nights Wed. women, and Thurs. men.

**Fertile**                      **Sand Hill River Golf Club**  
44203 St., Hwy 32 SW  
218-945-3535

<http://sandhillrivergolf.com/>

Public course, 9 holes, grass greens and pro-shop. Cart and club rentals.

**Fosston**                      **Fosston Golf Course**  
32132 US Hwy 2 SE  
218-435-6535

1 mile west of Fosston

Public course, 9 holes with a Par 36, grass greens, cart and club rental, pro-shop, and clubhouse.

**Greenbush**                      **Oakview Golf Course**  
993 Central Ave. W  
218-782-2380

Hwy 11 West

9 hole public course, grass greens, and watered fairways. Club house, pro-shop, rentals, and snacks. Closed for league play Wednesday evenings.

**Hallock**                      **Two Rivers Golf Course**  
902 7th St. SE  
218-843-2155

9 hole grass green course. New clubhouse facilities. Close to swimming pool, cart and clubs available for rent.

**Karlstad**                      **Karlstad Golf Course**  
218-436-4653

[golf@wiktel.com](mailto:golf@wiktel.com)

<http://www.karlstadgolfclub.com/>

1 mi E on Hwy 11

Public course, 9 holes, grass greens.

**Lancaster**                      **Riverside Golf Course**  
3260 US Highway 59 N  
218-762-4653

3/4 miles N of town

Public course, 9 holes, grass greens, watered fairways, 6 holes along river, water hazards on 2 holes, driving range, 12 rental electric carts, & rental clubs available

**Red Lake Falls**                      **Oak Knolls Golf Club**  
Highway 32 S  
218-253-4423

<http://www.redlakefallsgolf.com/>

9 hole course located along the river. Features a variety of challenges including teeing off over a cliff, water hazards, streams, wooded areas, and a number of hills and sand traps. Cart and club rentals available.

**Roseau**                      **Oak Crest Golf Course**  
5th St. S  
218-463-3016

[www.oakcrestgolfcourse.com](http://www.oakcrestgolfcourse.com)

Public course, 18 holes, par 71, grass greens, club and cart rental, pro-shop, club house, and driving range. Located along the Roseau River.

**Stephen**                      **Riverside Golf Course**  
5th St. & Golf Terrace Rd.  
218-478-2735

Public course, 9 holes, grass greens, Par 34, cart & club rental, pro-shop and clubhouse. Campground and swimming pool close by. Located near the Tamarac River.

**Thief River Falls**                      **Thief River Golf Club**  
13697 188th St NE  
218-681-2955

[trgolfproshop@mncable.net](mailto:trgolfproshop@mncable.net)

<http://www.thiefrivergolfclub.com/>

1 Mile North on Hwy. 32

Beautiful scenic views, challenging 18 holes. Season Opening depends on weather (7 am until dusk, 7 days/week).

**Warren**                      **Warren Riverside Golf Course**  
900 E. Johnson Ave  
218-745-4028

Public course, 9 holes, club house, cart rental, and driving range. Near campgrounds.

**Warroad**                      **Warroad Estates Golf Course**  
37293 Elm Dr.  
218-386-2025

<http://www.warroadestates.com/>

1 mi N of Hwy 11 on Hwy 313 W side of Warroad

18 holes par 72, grass greens, club and cart rental, pro-shop, restaurant, wooded location, and many water hazards.



## Area Attractions

### Swimming Pools

**Ada**                                      **Dekko Community Center**  
107 4th Ave E  
218-784-7665 (POOL)

<https://www.adamn.gov/p/getinvolved/dekkocenter>

\* Open year round

The center has an indoor junior olympic-sized swimming pool, wading pool, whirlpool, sauna, two racquet ball courts, elevated walking track, exercise/weight room, locker rooms, public library, and multipurpose/community meeting rooms.

**Crookston**                                      **Crookston Community Pool**  
320 E.5th St  
218-281-1180

<http://www.crookstonpool.com/>

\* Year Round

Olympic size indoor pool and diving tank with sun deck. Hours listed on website.

**East Grand Forks**                                      **East Grand Forks City Pool**  
919 5th Ave NW  
218-773-9231

Located in Sherlock Park.

**Fosston**    **Fosston City Pool**  
215 E 1st St  
218-435-1448

On Hwy 2 at Civic Center  
Indoor Pool

**Greenbush**    **Greenbush Community Pool**  
218-782-5211

On Park Ave.

\* Adult/ Student daily rate and season passes

Outdoor swimming pool with lessons and public swimming.  
Schedule subject to change.

**Hallock**    **Hallock City Pool**  
800 7th St. SE  
218-843-2400

Located in the City Park.

**Red Lake Falls**    **Red Lake Falls Swimming Pool**  
812 Chicago Ave. SW  
218-253-2194

Junior Olympic Pool. Lessons, open swim, pool party rental.

**Roseau**    **Roseau Community School Pool**  
509 NE 3rd St.  
218-463-2489

Lessons and public swimming. Open daily, times subject to

**Stephen**    **Stephen Swimming Pool**  
600 Lincoln Ave.  
218-478-3626

Outdoor Pool - Kiddie pool, lessons, private lessons, water aerobics, pool parties, and snacks. Campground and golf course close by.

**Thief River Falls**    **Franklin Pool**  
300 Spruce Ave. S  
218-681-8065

Franklin Middle School

\* Open year round

Indoor pool. Open to public and visitors, specified hours.

**Warren**    **Warren City Pool**  
E. Pleasant & 8th St.  
218-745-4777

NE corner of town

Located in the City Park, near campgrounds, tennis court, baseball field, horseshoe area, volleyball area, golf course and fairgrounds.

**Warroad**    **Middle School Indoor Pool**  
510 Cedar Ave.  
218-386-2371

In Middle School

Sauna, whirlpool, and Olympic size lanes. Open to public and visitors at specified hours.

**Warroad**    **Warroad Community Pool**  
4th Av NE & MacKenzie  
218-386-1454 or 218-386-2371

Located in the Warroad Point Park. Outdoor sand beach-style pool.

### Bowling

**Ada**    **ARC Bowling Lanes**  
16 4th Ave E  
218-784-3901

6 Lane Bowling Alley and food

**Hallock**    **Shamrock Lanes and Grill**  
Hwy 75 N.  
218-843-8868

Open year round. Offers dining and beer.

**Roseau**    **Spare Time Bowl and Arcade**  
121 Main Ave. South  
218-463-1956

**Thief River Falls**    **Family Bowl and Lounge**  
906 Hwy 32 South.  
218-681-1270

**Twin Valley**    **Young's Alley & Café**  
109 Main Ave W  
218-584-4602

Small town Café and Bowling Alley. Daily lunch specials.

### Movie Theatres

**Ada**    **Orpheum Theatre**  
305 W. Main St.  
218-784-7565

Old-time theatre showing movies Friday - Sunday.

## Area Attractions

---

### Crookston

### Grand Theatre

124 East 2nd St.  
218-281-1820

<http://www.moorefamilytheatres.com/>

Oldest continuously operating movie theatre in the U.S. Two screens.

---

### East Grand Forks

### River Cinema 15

211 Demers Ave.  
218-399-9000

<http://www.moorefamilytheatres.com/>

Located in the Riverwalk Centre.

---

### Fosston

### Fosston Theatre

105 1st St. W  
218-435-1700

<http://www.moorefamilytheatres.com/>

Evening movies and daily matinees.

---

### Roseau

### Roso Theatre

310 Main Ave. N  
218-463-2601

\* Fri - Mon at 7pm; also 4pm Sat and Sun

---

### Thief River Falls

### Falls Cinema

15469 Hwy. 59 SE  
218-681-9945

<https://www.fallscinema.com/>

---

### Warren

### Sky-Vu Drive In

34880 State Hwy 1 NW  
218-745-4161

[www.skyvumovies.com](http://www.skyvumovies.com)

Weekends in the summer months after dark. Only a few drive-ins left in Minnesota.

---

## Tours

---

### Crookston

### Crookston Daily Times

124 S. Broadway  
218-281-2730

<http://www.crookstontimes.com/>

Tours of the newspaper printing process are available upon request.

---

### Crookston

### New Flyer of America

214 5th Ave SW  
218-281-5752

<http://www.newflyer.com>

Tours of bus manufacturing plant are available by appointment only.

---

### Crookston

### Red River Valley Sugarbeet Museum

1345 Fairfax Ave  
218-281-2550

<https://www.sugarbeetmuseum.com/>

By appointment only. View vintage farm machinery and other ag related items. Learn the history of agriculture in the valley. A harvest festival is held the first Sunday after Labor Day; watch the farmers harvest the sugarbeets with the antique farm equipment.

---

### East Grand Forks

### Heritage Village

219 20th Street NE  
218-773-3952

<http://www.egfheritage.com/>

Next to Technical College

This historic village serves as an instrument preserving the history of the Northern Red River Valley. During Heritage Days, the third week of every August, steam engine threshing machines, museum displays, demonstrations, and much more await your visit. Weekend tours are available. Call for tour arrangements.

---

### East Grand Forks

### Northern Lights Model Railroad Assoc. & Museum

1623 River Road NW  
218-773-6668

<http://www.northernlightsrailroadmuseum.org/>

\* 10 am - 4 pm on Saturdays

A collection of Lionel HO scale model trains is housed in a building that resembles a train depot. Watch members operate a staged workday from 10 am to 4 pm on Saturdays or arrange for a tour.

---

### Fertile

### Bergeson Nursery and Gardens

4177 County Hwy 1  
218-945-6988

[info@bergesonnnursery.com](mailto:info@bergesonnnursery.com)

<https://www.bergesonnnursery.com/>

SE of Fertile, in Norman County

Self guided tours of large gardens planted yearly with a variety of annuals and perennials which thrive in our climate. Annually changing displays.

---

### Fertile

### Sand Hill Safari Tours

218-945-3136

Located at the Nature Center

Safari van tours of the Sand Hills are available during the summer and early fall months only. Enjoy a narrated trip around the perimeter of the 640 acre Sand Hills wilderness area.

---

### Goodridge

### Good-Vue Ayr Farms

21625 330th Ave NE

Contact: Lynn & Norman Hanson

218-378-4380

Dairy and small grain operation. Call for an appointment.

---

### Greenbush

### Central Boiler

20502 160th Street  
218-782-2575

<http://www.centralboiler.com>

Central Boiler, established in 1984, is the premier manufacturer of quality outdoor wood furnaces in North America.

---

### Greenbush

### DRB Fabrication

218-782-5622

700 County Rd. 7 N

Metal stamping, machining, and fabrication of aluminum and carbon steel.

## Area Attractions

---

### Hallock

Contact: Cheri Reese or Mike Swanson

[cheri@farnorthspirits.com](mailto:cheri@farnorthspirits.com)

<http://farnorthspirits.com/>

The northernmost distillery in the contiguous United States, Minnesota's Far North Spirits is one of a handful of authentic field-to-glass estate producers of small-batch, craft-distilled spirits. Call to request information on tours and tastings.

---

### Far North Spirits

2045 220th Ave

---

### Middle River

### Agassiz Wildlife Refuge Tour

22996 290th St. NE

218-449-4115

[Agassiz@fws.gov](mailto:Agassiz@fws.gov)

<http://www.fws.gov/refuge/agassiz/>

12 mi N of Thief River Falls on Hwy 32, then 11 mi E on Marshall County Rd 7.

\* Daylight Hours

"Lost Bay Drive" a four mile long self-guided auto drive, 100 foot observation tower, and a 14 foot observation deck with sightings of a variety of animal and plant life. University classes and other groups may be given talks and tours if arrangements are made in advance.

---

### Red Lake Falls

### Northwest Manufacturing

600 Polk Ave. SW

218-253-4328

[www.woodmaster.com](http://www.woodmaster.com)

Manufacturers of wood, corn, and pellet stoves. Please call ahead to schedule a tour of the facility.

---

### Red Lake Falls

### The HOMARK Company

100 3rd St.

218-253-2777 or 800-382-1154

<http://www.homark.com/>

This employee owned company, manufactures mobile homes and manufactured housing. Call to arrange a tour of the facility.

---

### Roseau

### Polaris Experience Center

205 5th Ave. SW

218-463-4999

[www.polarisindustries.com](http://www.polarisindustries.com)

North of Polaris on Hwy 89

Walk back through time to see vintage snowmobile machines, also new models on display. Retail gift shop. Please call for large groups of people.

---

### Roseau

### Polaris Industries

301 5th Ave SW

218-463-2312

<http://www.polarisindustries.com/>

Hwy 89 South

Tour of the Polaris snowmobile factory and Polaris Experience Center. Large groups call ahead.

---

### Thief River Falls

### Digi-Key Electronics

701 Brooks Ave. S.

218-681-6674

<http://www.digikey.com/>

\* Open year round

Digi-Key, one of the leading distributors of electronic components in the United States, offers weekday tours on a reservation basis, between 9:00 am and 3:00 pm. Tours are approximately one hour in length.

---

### Thief River Falls

### Textron Specialized Vehicles

600 Brooks Ave S.

218-681-8558

<http://www.arcticcat.com/>

\* Open year round

The manufacturer of Arctic Cat Snowmobiles and Textron Off-Road side-by-sides and ATVs. Tours offered at 1 p.m. Monday through Friday. Please call ahead to arrange large group tours.

---

### Warroad

### Heatmor Inc.

105 Industrial Park Court NE

218-386-2769 or 1-800-834-7552

[woodheat@heatmor.com](mailto:woodheat@heatmor.com)

<http://www.heatmor.com/>

Tour of the outdoor wood burning stove manufacturer. Call for appointment.

---

### Warroad

### Marvin Training and Visitors Center

704 Hwy 313 N

218-386-4334

<http://www.marvin.com/>

Located at the corner of highway's 11 and 313.

6000 square foot visitor Center allow guests to experience the rich history, innovations and commitment to excellence of Marvin Windows and Doors. The exhibits include artifacts and interactive presentations that will wow visitors of all ages. Open to the public with free admission weekdays 8am-6pm and weekends from 1 pm to 4 pm.

---

### Warroad

### Marvin Windows & Doors

802 State Ave. N

888-537-7828 or 218-386-4222

<http://www.marvin.com>

Manufacturer of custom made windows and doors. A one hour tour given on a walk-in or reservation basis.

---

## Special Attractions

---

### Ada

### Norman County Raceway

218-791-7169

[www.ncraceway.com](http://www.ncraceway.com)

Located at the county fairgrounds

Thursday night multiple car class races, April - September.

---

### Ada

### Red River Valley Saddle Club

MN 200

218-456-2462

Located at the Ada fairgrounds

Judged and timed events with a potluck lunch. Six shows occur with a year end awards banquet.

---

### Ada

### Studio 4:13

309 West Main St.

218-308-1714

<http://www.studio413.org/>

Enjoy art, mosaics, and the creation of beautiful pottery at Studio 4:13. The facility frequently has special events, monthly art program and a number of exciting activities.

## Area Attractions

<b>Ada</b>  smcapp@loretel.net Offering 80+ varieties of heirloom plants and vegetables. Heirlooms, beekeeping, and homestead-arts workshops and tours available.	<b>The Laughing Earth Greenhouse</b> 703 E Thorpe Ave 218-784-3300	<b>East Grand Forks</b>  At Central Middle School This 25,000-square-foot butterfly garden situated on a 30-acre site restored to native prairie grasslands attracts all types of butterflies, while the native prairie site features a variety of different grasses and wildflowers and is great for bird watching. Visit or call for a tour.	<b>Butterfly Garden</b> 1827 Bygland Rd 218-773-3190
<b>Badger</b> Corner of Highway 11 and University Ave (Cnty Rd 2) Commemorating US Armed Forces. Annual Memorial Day Program.	<b>Veteran's Memorial Park</b>	<b>East Grand Forks</b>	<b>Civic Center Arena</b> 218-773-8000 Indoor recreation, tennis, toilets, and skating.
<b>Borup</b>  KrepsFamilyFarm@gmail.com We are a small family farm located north of the Fargo/Moorhead Area. We raise produce, eggs, poultry, swine, goats, & beef cattle. We are your local source of homemade jams & jelly's, breads, pies, baked goods, and picante/salsa.	<b>Kreps Family Farm, LLC</b> 7326 160th Ave N 701-200-1719	<b>East Grand Forks</b>	<b>Stable Days Youth Ranch</b> 17721 429th Ave SW 701-330-9952 Equine based Mentoring, K- College Student Group Field Trips & Projects, and Special Needs Adult Volunteer Program
<b>Crookston</b> Contact: Wayne Swanson 2 mi. N of Crookston on Hwy 75 & 1/4 mi. W on Twp Gravel. or call 218-281-1614. Rifle Range 4 100 yd - benches. 3 Trap Houses. Pistol Range, 12 targets 7.5, 25, and 50 yards. Pin Table & Metallic Knock-Downs. Sporting Clays Range with 10 Stations. Call for times and dates. We also teach Minnesota Gun Safety Training.	<b>Crookston Gun Club</b> 218-281-5143 (Seasonal)	<b>East Grand Forks</b>	<b>The Grape Mill Vineyard &amp; Winery</b> 18696 Ave. SW 218-499-WINE www.thegrapemill.com The Halverson Family planted their first 200 vines in 2006. Overlooking the banks of the beautiful Red Lake River, our cold hardy grape vines produce a unique flavor specific to our region. Today, the vineyard has over 1,600 vines including the varieties Marquette, La Crescent, Frontenac, Frontenac Gris and Brianna. We hope you'll enjoy our wines and appreciate the time and effort that goes into each bottle.
<b>Crookston</b> Ice Skating, Walking track, and Golf Simulator	<b>Crookston Sports Center</b> 801 Fisher Ave	<b>East Grand Forks</b>	<b>Valley Corn Maize</b> 42969 160th St SW 701-215-6886 www.valleycornmaize.com 1 mile east of EGF on Hwy 2. Intersection of 160th Street SW & Hwy 2 Wonderful family activities including large corn maize, pumpkin patch, giant slide, concessions, tractor rides, rope spiderweb, tetherball, cornbox, rat race, croquet, corn hole game, and air blaster. Creating a place for families to create everlasting memories. Open weekends in Sept. and Oct.
<b>Crookston</b> https://www.facebook.com/CrookstonFarmersMarket/ Local farmers offer produce bred for taste and freshness. Natural and organic vegetables, produce, meat, flowers, herbs, jams, jellies, fruit, grains, home processed products, and homemade crafts. Summer months.	<b>Crookston's Farmer's Market</b> Downtown Central Square, corner of N Ash St and E 3rd St 218-281-5204	<b>Fertile</b>	<b>Fertile Vineyard</b> 15700 415th ST SE 701-866-5240 Many different types of fruits & vegetables grown on the farm. Most vegetables grown in high tunnels. We also have hops. Grapes for sale. Call ahead for appointment. PYO strawberries & raspberries or we pick. Netted & weed free. Strawberries & raspberries also grown in high tunnels so you can pick rain or shine! Seasonal: Daily: 8a-4p.
<b>Crookston</b> A walkway to honor those who have served our country features life-size monuments, flowers, and a picnic shelter. On special occasions, 96 flags line the entire walkway.	<b>Military Memorial Walkway M-20</b> Corner of US Hwy 2 and Fairfax Ave	<b>Fertile</b>	<b>Papercuts</b> 206 Elm St SE 218-280-9362 papercuts@papercutsfertile.com http://www.papercutsfertile.com/ A crafters getaway with a studio for crafting with supplies available, a lounge for relaxing plus sleeping accommodations for up to 10. All linens and towels provided plus many amenities. Wifi, smart TV's, irons, ironing boards, color printer, paper punches, die cutting machines and many more for a fun crafting getaway.
<b>Crookston</b> Nestled into a beautiful woodland setting, surrounded by the Red Lake River, Mount Saint Benedict has been a part of the Crookston landscape since 1920.	<b>Mount St Benedict Monastery</b> 620 Summit Ave N 218-281-3441		



## Area Attractions

---

**Fisher**                      **Fisher Farmers and Artists Market**  
3rd St

Held every Wednesday from mid July to Labor Day with a featured guest each week.

---

**Greenbush**                      **Greenbush MX Dirt Bike Race Track**  
218-689-5907

Located to the North of the school bus garage. Races held the weekends of July 4th and August 1st.

---

**Greenbush**                      **Greenbush Race Park**  
700 Co Rd 7  
218-782-2144

Dirt Track car racing every Saturday night.

---

**Greenbush**                      **Wojo's Arena**  
23162 220th St.  
218-782-3751

[dana@wojoshorsetraining.com](mailto:dana@wojoshorsetraining.com)

<http://www.wojoshorsetraining.com/>

Outdoor horse area. Activities include team roping, game days, horse training, trail riding, and other horse related events.

---

**Hallock**                      **Revelation Ale Micro Brewery and Tap Room**  
146 S Atlantic Ave  
218-510-0001

Owner: Ryan Evanson

[ryan@revaes.com](mailto:ryan@revaes.com)

<http://www.revaes.com/>

Corner of Hwy 75 and S 2nd St

Local craft brewery in Hallock, Minnesota. Serving beer, pizza, and non-alcoholic root beer made in-house.

---

**McIntosh**                      **Annie's Garden**  
39444 240th Ave SE  
218-563-2181

We sell our own farm produce vegetable's, fruits, eggs, baked bread, pastries, jam, raw honey and even chicken meat! (by order)

---

**McIntosh**                      **McIntosh Heritage and Arts Center**  
250 SW Cleveland Ave  
218-563-2040

[www.mnhistoricnw.org](http://www.mnhistoricnw.org)

Our mission is to stimulate interest in the history of McIntosh as the hub of the original Thirteen Towns of eastern Polk County; to provide collection, preservation and research of relevant historical artifacts for the public and to preserve and display local art from the past and present while promoting future artistic creativity.

---

**Mentor**                      **Mentor's Farmer's Market**  
Mentor City Park  
218-521-0793

Throughout the summer, the market will provide a good variety of fresh produce, breads, lefse, jams, salsa, eggs, honey, donuts, baked goods, bagels, jewelry, American Girl doll clothing, live plants, night crawlers, local print t-shirts, and much more.

---

**Mentor**                      **Schulstad U-Pick Raspberries & Produce**

39397 160th Ave. SE

218-574-2292 or 701-371-7010

9 miles south of Mentor on Polk Co. Highway #10

Raspberries available starting in early/mid July. Seasonal produce available from our outdoor garden and 3 hightunnels. If you have not seen a high tunnel growing system, it is worth the trip out just to see what happens in those tunnels, or as they are often called, hoopouses. Horticultural research is also being done for the University of Minnesota. Call for updates or to make sure we are home.

---

**Middle River**                      **The Garden Shop**  
39995 State Hwy 32 NE  
218-222-3540

Visit our greenhouse for annual and perennial plants for your garden. Our country store offers fresh picked vegetable & strawberries as well as gift items. During Christmas season, we offer fresh handmade wreaths of all sizes. Farm fresh eggs available year round and home produced pickles, salsa, and jam are also available.

---

**Middle River**                      **Winter Attractions**  
250 Hill Ave.  
218-222-3608

Outdoor lighted skating rink with warming house and a winter sliding hill.

---

**Newfolden**                      **Newfolden Farmers Market**  
Downtown off Hwy 59  
218-874-7135

Specializing in fresh produce from area growers, canned food items, baked goods, and crafts. Our motto is Homegrown, Homemade, Handmade!

---

**Nielsenville**                      **Nielsenville Veteran's Memorial**  
On the corner of Polk Co 1 and Spokely Ave

---

**Perley**                      **Valley Sportsman's Club**  
1429 180th St.  
218-861-6302

Shooting range with weekly trap shoots.

---

**Plummer**                      **Plummer Sportsman Complex**  
Contact: Brent Hemly                      218-686-7248  
Shooting complex for rifle, handgun, archery, and sporting clays

---

**Red Lake Falls**                      **Beau Pre Farm**  
218-253-2270

I raise natural colored and white heritage sheep in Northwest Minnesota using no growth hormones or unnecessary antibiotics or castrations. I sell fleeces, breeding stock, and fresh or frozen lamb to local stores. I also provide slaughter facilities for Muslims seeking an appropriate and respectful environment for their cultural practices. Farm tours and mail-orders welcome.

## Area Attractions

---

### Red Lake Falls

### Red Barn Orchard/Spurgin Farms

15692 180th St SE  
218-465-4648

mspurgin2@gmail.com

County Rd 23 toward Plummer

We at Spurgin Farms believe in producing healthy produce using organic practices, grown without the use of pesticides or herbicides. We have a limited quantity of pre-picked apples including: Honeycrisp, Zestar, Red Melba & Prairie Magic. Also available: pumpkins, squash, hay bales, & seasonal garden decor featuring antique glass bird feeders & garden whimsies.

---

### Red Lake Falls

### Voyageurs View Campground and Tubing

18611 105th Ave. SW  
218-253-4329

<http://www.voyageursview.com/>

Co Rd 13 N

Tubing on the Red Lake River; shuttle service provided. 2 to 3 hour runs with rapids, islands, cliffs, and forest. See listing in Campground Section for more information. Home of Tubing's World Record 749 Flotilla.

---

### Red Lake Falls

### Weiss Asparagus Farm

10934 240th St SW  
218-289-3079

Family owned local business that offers freshly picked asparagus during the season of May and June. Also offers pickled asparagus all year long.

---

### St. Hilaire

### River Falls Ranch

13500 150th Ave SE  
218-964-5370

riverfallsranch@hotmail.com

<https://www.riverfallsranch.com>

Our goal is to provide farm fresh products through honest service to our customers. Garden produce & home canned goods are sold on our farm.

---

### Thief River Falls

### Cider Mill Garden Center and Pumpkin Patch

14648 US Hwy 59

<https://www.facebook.com/cidermilltrfnn/>

Greenhouse, pumpkins, hayrides, barrel train rides, corn maze, corn cannons, spider swing, mini-golf, and many more fun activities.

---

### Thief River Falls

### Crossfit Great North

1571 Hwy 59 SE  
218-684-5072

tate@cfgreatnorth.com

<https://www.cfgreatnorth.com/>

Weight room, racquetball, basketball, badminton and wallyball courts. Locker rooms with showers and saunas. Studio for parties and exercise classes. Also rent Stand up Paddle boards and Kayaks for full or half days.

---

### Thief River Falls

### Falls Stay 'n Play

17107 US Hwy 59 NE  
218-681-7066

<http://fallsstaynplaytrf.com/>

Location: Corner of Hwy 59 & 1

Go karts, mini-golf, arcade, and playground equipment.

A full 75-site campground with laundry facilities, bathrooms, restaurant, free wifi, and 24-hour conveniences. Cable TV available.

---

### Thief River Falls

### Seven Clans Casino & Waterpark

20595 Center Street East  
218-681-8370 or 800-881-0712

<http://www.sevenclanscasino.com/>

Located at Seven Clans Casino, 8 miles south on Highway 59.

\* Year round

Waterpark has 8 waterslides and a lazy river. Do not have to be a motel guest to enjoy the waterpark. Snack bar located in waterpark. More than 700 slots, 10 blackjack tables, great food, players club, and 151 suite motel.

---

### Thief River Falls

### Thief River Falls Farmer's Market

Floyd B Olson Park  
218-686-0179

Local producers offer a wide variety of fresh garden produce, pies, cookies, breads, jams, jellies, salsa, canned goods, honey, annuals, perennials, maple syrup, grass-fed beef & lamb, eggs, handmade soap, other handmade items.

---

### Twin Valley

### Prairie Chicken Observation Blinds

218-584-5658

2 blinds available from April until June. To schedule a reservation or ask questions, call the number above (Twin Valley Heritage Center).

---

### Twin Valley

### Rifle Range Trap and Skeet Shoot

218-945-6874

---

### Twin Valley

### Twin Valley Riders Club

<http://www.twinvalleyridersclub.net/>

The Twin Valley Riders Club Arena is set up for horse shows, roping, ranch rodeos and team penning/sorting. "Fun Days" horse events every third Sunday in May through August. Trail rides occur from May to October.

Free primitive camping near Twin Valley Riders Club Equestrian Park. Flush toilets available.

---

### Warren

### Northwest Minnesota Arts Council

109 South Minnesota St.  
218-745-9111

Contact: Mara Hanel

[mara@nwrwc.org](mailto:mara@nwrwc.org)

<http://www.northwestminnesotaartscouncil.org>

The Arts Council web site is filled with information on local arts organizations including performance theater and visual art galleries. The site also includes a directory of information on local artists who create original art that is for sale. Some artist's studios are open to the public and are great places to visit while on vacation in our area. Additional event listings and artists profiles are listed on [www.mnartists.org](http://www.mnartists.org).

## Area Attractions

### Warroad

### Country Corn Maze

59404 County Road 12  
218-469-3390

Contact: Art & Camille Krahn  
artkrahn@wiktel.com  
www.countrycornmaze.org

Admission includes as many trips through the maze as you desire, hayrides, bale castle, one shot with the giant slingshot, campfires, and more! Appointments can be made for groups of 20 or more.

### Warroad

### Seven Clans Casino

1012 East Lake St.  
218-681-4062 or 218-681-8370

<http://www.sevenclanscasino.com/>

Blackjack, Keeno, 250 direct payout slotmachines. Open 7 days a week. Includes the Lakeview Restaurant.

### Warroad

### The Shed

Highway 11 West  
218-386-2211

theshedwarroad@gmail.com  
<http://theshedwarroad.com/>

\* Hours vary, please call for availability

Classic and muscle car collection displayed in a 24,000 square foot building. Approximately 70 cars available for your viewing enjoyment.

### Warroad

### Warroad Summer Theater

Warroad High School Mini Theater, 510 Cedar Ave NW  
218-386-3435





## Museums and Historic Areas

### Ada

#### Prairie Village

<https://normanhgs.org/>

\* May to October

The Prairie Village in Ada is made up of 12 buildings that are historic in nature and help to tell the story of Norman County in a very tactile way. It also contains a museum whose exhibits change every other year.

### Argyle

#### Argyle Museum Depot

218-437-6347 or  
218-437-8580

Preserved Great Northern Depot, log shanty, and old jail. Call 218-437-6621 for tours. Includes all graduating class photos from the Argyle Public School. Open Sundays in the Summer.

#### Old Mill State Park

33489 240th Ave. NW

17 mi. NE of Warren, and 13 miles east of Argyle, or 11 miles west of Newfolden on County Road 4.

[oldmill.statepark@state.mn.us](mailto:oldmill.statepark@state.mn.us)

<http://www.dnr.state.mn.us/>

\* Open year round

Larson Grist Mill and pioneer cabin. See a 1880's grist mill powered by a Case #359 steam engine. Interpretive signs and audio-show. Pioneer cabin furnished with period household items, and traditional garden.

### Climax

#### Sand Hill Settlement

218-857-2455

Hwy. 220 W, 415 Riverside St

[www.shshs.org](http://www.shshs.org)

Log Farmstead.

### Crookston

#### Carnegie History Center

218-281-1038

101 N Ash St.

Home for traveling exhibits from the Minnesota Historical Society, operated by the Polk County Historical Society. The old Carnegie Library building is undergoing a restoration but still holds traveling exhibits from the Minnesota Historical Society along with local history and art displays throughout the year. Call the museum for a schedule of events.

#### Huot Park Historical Site

Located between Crookston and Red Lake Falls

Features the Old Crossing Treaty Monument commemorating the treaty signed at this location between the US Government and the Chippewa in 1863, opening the Red River Valley to settlers.

### Polk County Museum

218-281-1038

719 East Robert St.

Highway 2 East.

\* May - September

Closed in winter months, but will open for tours and appointments. Also, see Crookston's Historic downtown business district.

#### Red River Valley Sugarbeet Museum

218-281-2550

Contact: Allan Dragseth

1345 Fairfax Ave

<https://www.sugarbeetmuseum.com/>

Interesting display of Sugarbeet and Agriculture related equipment and memorabilia.

### East Grand Forks

#### Heritage Center

218-773-3952

219 20th St. NE

Next to Technical College

[Heritage.VillageEGF@gmail.com](mailto:Heritage.VillageEGF@gmail.com)

<http://www.egfheritage.com/>

Heritage Village preserves and brings to life the history of the Red River Valley with tours of pioneer buildings and presentations representing the upper Midwest and the life in the mid-to-late 1800's and early 1900's. Call for tour arrangements.

#### Northern Lights Railroad Museum

218-773-6668

219 20th St NE

<http://nlrm.org/>

Model railroad layouts, displays and exhibits and history of railroads in the Northern Great Plains. The museum is housed in an exact replica of the train terminal "Casey Holt Junction". Open every Saturday.

### Fosston

#### East Polk Co. Heritage Center

218-435-6136

Hwy 2 East

East side of town, next to Hospital.

<https://www.eastpolkheritage.org/>

\* June to September. \* Free

Restored 100 year old, ten room house full of historical furnishings, books, photographs, and memorabilia. Donated in 1986. Open weekends.

### Goodridge

#### Goodridge Historical Sites

218-378-4380

Historical buildings preserved and renovated in the downtown area. The Country Store Museum, Pioneer Living History Center, Log Barn and House, School Museum, Train Depot, and Country Store. Open by appointments during Summer months.

### Greenbush

#### Pelan Pioneer Park

A restored pioneer village, wildflower gardens and berries. Located 9 mi. W. on Hwy. 11 in Greenbush, MN.



## Museums and Historic Areas

### Lake Bronson

#### Kittson Co. History Center & Museum

218-754-4100

332 East Main Street

In City of Lake Bronson

\* Year round \* Free admission, donations welcome

A variety of exhibits about the past ways of life in the county. Many examples of antique cars and farm equipment. Special events held periodically. Includes a genealogy research library.

### Plummer

#### Tri River Pioneer Museum

Tri River Museum was established in 2006 to preserve the history and artifacts of the Tri River area which includes the Clearwater River, Red Lake River, and the Lost River. Call Roger Skjerven at 218-465-4238 or Glenyce Eskeli at 218-465-4446 to arrange a time to visit the museum.

### Roseau

#### Memorial Arena

218-463-2351

321 2nd Ave. NW

Houses the history of hockey for Roseau - the home of NHL, Olympic, collegiate, and high school champions and medalists.

#### Pioneer Farm and Village

218-463-1045

Located 2 1/2 miles West of Roseau on Hwy 11

<http://roseaupioneerfarm.com/>

History buffs will enjoy the Roseau Pioneer Farm and Village that showcases various buildings that have been moved in from across the area and restored. Visit an actual one room school house, a print shop, mercantile, and church among other buildings. Each fall a Pioneer Farm festival is held showing many old time demonstrations along with music and other activities for the whole family.

#### Roseau Co. Museum & Interpretive Center

218-463-1918

121 Center St. E; Suite 101

[rchsroseau@mncable.net](mailto:rchsroseau@mncable.net)

[www.roseaucountyhistoricalsociety.org](http://www.roseaucountyhistoricalsociety.org)

\*Open Year round

Organized in 1927, the museum displays the history of Roseau County through interpretive exhibits using artifacts, documents, and photographs of the area that tell the story of the county's past and present culture. The research center is a resource for all areas of county, township, city, and individual information. The museum is organized under the Roseau County Historical Society. The Historical Society holds an annual meeting in April. Host events and provides educational tours/programs to schools and organizations.

### Shelly

#### Red River History Museum

218-886-7335 or  
886-8895

Intersection of 3rd St. E and McKinley Ave.

The Red River History Museum has many unique things to offer such as the Loom Room. This room has 3 large working looms, with which they hold weaving classes (please call one of the numbers above to see class schedules). They also have other areas dedicated to doctors, schools, military uniforms and old toys.

### Stephen

#### Old Home Town Museum

218-478-3562

608 5th St.

Across from Riverside Golf Club.

\* August - September

Artifacts, exhibits, harness shop display, antique machinery, equipment, and tools. Open Sundays from 1-5 or call for tour appointments anytime.

### Thief River Falls

#### Peder Engelstad Pioneer Village

218-681-5767

825 Oakland Park Road

\* Memorial Day to Labor Day

The Village has 19 buildings, including a museum, Victorian house, two railroad depots, school house, church, blacksmith shop, machinery and automobile building, and seven log houses.

#### Soo Line R.R. Depot

218-681-2500

405 3rd St E

US Hwy 59 on the easterly edge of the Central Business District.

\* Open year round, except holidays.

This two-story Flemish brick & limestone, Craftsman-style combination passenger and freight depot was completed in 1914. It is the only first-class architecturally designed Soo Line Railroad Depot remaining in Minnesota. The Depot was placed on the National Register of Historic Places in 1995. The Depot was restored and remodeled in 1997 and now functions as City Hall. An exhibit of historic railroad photographic panels is on permanent display. Steam Locomotive No. 1024, a Soo Class L-4, 2-8-2 MIKADO, is on permanent display outside the Depot.

#### Steam Locomotive No. 1024

218-681-2500

405 3rd St E

On the Soo Line Railroad Depot- City Hall site.

Steam Locomotive No. 1024, a Mikado class steam engine, was built by the American Locomotive works, Dunkirk, in 1912 for the Monon Railroad of Indiana. The 1024 and seven other locomotives were sold by the Monon R.R. to the Soo Line R.R. in 1941 and 1942. It is the last known steam locomotive of its type in existence that was operated by the Monon R.R. The Soo Line R.R. donated the locomotive to the City and it has been on static display at the Depot site since 1956.

## Museums and Historic Areas

### The Carnegie Library

218-681-3720

102 Main Ave. N.

The Carnegie Public Library was dedicated in 1914. In 1968, the library moved to a new building, but the original location has since housed several organizations in the community.

### Twin Valley

#### Heritage Museum, Art Gallery & Tourist Info Center

218-584-5658

104 First Street NE

Two buildings on Hwy. 32 under Water Tower.

The Twin Valley Heritage Center is a museum, information center, and an Art Gallery. The Heritage Center provides you with an opportunity to step back into the past of the local area with museum artifacts, history, and information. Restored log house located on the site.

Agassiz Recreational Trail passes alongside of depot replica.

### Warren

#### Settlers Square Museum/Historical Society

218-745-4803

808 East Johnson Ave.

East end of Johnson Ave., South of the Fairgrounds.

mchs@wiktel.com

Historical Village featuring eight store fronts depicting an 1880 street. Main building houses many pieces of antique farm machinery. On display, the UFO Sheriff's car of Marshall County. Open Memorial Day to Labor Day from 10 am to 5 pm, Monday - Friday. Special appointments welcomed. Free admission.

### Warroad

#### 3 Historical Markers

218-386-3543

There are three Historical Markers within the City Limits.

1. Warroad Point Park, at end of Lake St. NE. Establishment of Fort St. Charles.
2. Lake St. NE, just west of 1st Ave. Old "war road" from which the river and village derived their name (Sioux would invade the territory by way of the Red and Roseau Rivers. This route ended at the mouth of the Warroad River).
3. Lake St. & Hwy. 11. Warroad Fur Post.

#### Canadian National Depot

218-386-1454

121 Main Ave. NE

This railroad depot opened to the public on July 4, 1985. The oak doors, window casings, and woodwork are restored from the original building, as is the counter at the office building. The public washroom doors are from the original building. The Depot now serves as the Warroad City Office center and is on the National Register of Historical Places.

#### The Gardens Arena

218-386-3862

707 Elk St. NW

Houses the history of hockey for Warroad - the home of Olympic Champions and medalists. The Gardens features an Olympic size ice sheet. Lobby level, seating area and lower level is a total of 70,000 square feet. It houses 1,703 theater-style permanent seats. Its 9,960 sq. ft. lobby contains the main office, meeting room, photo history panels, public restrooms, and concession area.

### Warroad Heritage Center & Museum

218-386-2500

202 Main Ave. NE, PO Box 688

<https://www.facebook.com/WarroadHeritageCenter>

\* Free

Exhibits and artifacts: Ojibwa artifacts from the Warroad area, the local commercial fishing industry, the Northwest Angle, early pioneers, military, the fur trade, Marvin Windows & Doors, Christian Brothers Hockey Stick factory & Sports. Works by area writers, genealogies & old photographs with information on the early lumber industry, mink ranching, boating, transportation, & special holiday exhibits.



## Area Attractions

### Outfitters/Bait Shops

<b>Beltrami</b>	<b>Today's Tackle</b>	218-926-5682	
	icebustr@gvtel.com	http://www.todaystackle.com/	
<b>East Grand Forks</b>	<b>Cabela's</b>	218-773-0282	Hunting & fishing store featuring trophy animals.
		http://www.cabelas.com	
<b>Erskine</b>	<b>Fuel 'N Things</b>	218-687-5137	Bait, tackle & gas
<b>Fertile</b>	<b>Northside Express</b>	218-945-6161	Bait, gas & tackle
<b>Greenbush</b>	<b>Blooming Valley Outfitters</b>	218-782-BEAR	Full service hunting guide
	lemery@wiktel.com	www.bloomingvalleyoutfitters.com	
<b>Greenbush</b>	<b>River's Edge Bait and Convenience</b>	218-782-2339	Bait, tackle, fee base hunting. Free advice
<b>Halstad</b>	<b>Valley Hardware and Supply</b>	218-456-2148	Bait, tackle & fishing/game licenses.
	valleyhardware@rrv.net	https://www.valleyhardwarehalstad.com/	
<b>Karlstad</b>	<b>Bear Buster Outfitters</b>	218-436-2494	
		http://bearbusters.net	
<b>Lake Bronson</b>	<b>Lake Bronson Market</b>	218-754-4213	
<b>Mentor</b>	<b>Harlan's Boats R Us</b>	218-637-2050 or 888-327-8802	Boat sales, storage & service, bait, tackle
<b>Mentor</b>	<b>Oak Cove Resort &amp; Marine</b>	218-637-2124	Bait, tackle, boat sales/repair/rental
	oakcoveresort@gvtel.com	https://oakcoveresortandmarine.com/	
<b>Roseau</b>	<b>Cenex "C" Store</b>	218-463-1836	Bait, gas & tackle
<b>Roseau</b>	<b>Denny's Outdoor Sports</b>	218-463-9913	Bait, gas & tackle
	dennys@mncable.net	http://dennysoutdoorsports.com/	
<b>Thief River Falls</b>	<b>Erl's Market</b>	218-681-4627	Bait
<b>Thief River Falls</b>	<b>Hunters Outlet</b>	218-681-3030	
		https://www.huntersoutletinc.com/	
<b>Warroad</b>	<b>Farmers Union Oil Co.</b>	218-386-1318	Bait, tackle, gas, service shop & C-store
<b>Warroad</b>	<b>Rich's Ice Fishing</b>	218-821-6464	
		http://richsicefishing.com/	
<b>Warroad</b>	<b>Riverside Bait and Tackle</b>	218-386-1200	Bait, tackle, licenses, fishing info. Station
<b>Warroad</b>	<b>The Woods Sporting Goods</b>	218-386-2590	Bait, tackle, licenses, supplies, archery range
		https://thewoodsgoods.com/	

## Area Attractions

### Libraries

<b>Ada</b>	<b>Ada Public Library</b>	218-784-4480	Contact for information
	<a href="mailto:ada@larl.org">ada@larl.org</a>	<a href="https://larl.org/locations/ada/">https://larl.org/locations/ada/</a>	
<b>Climax</b>	<b>Climax Public Library</b>	218-857-2455	Contact for information
	<a href="mailto:climax@larl.org">climax@larl.org</a>	<a href="https://larl.org/locations/climax/">https://larl.org/locations/climax/</a>	
<b>Crookston</b>	<b>Crookston Public Library</b>	218-281-4522	Contact for information
	<a href="mailto:crookston@larl.org">crookston@larl.org</a>	<a href="https://larl.org/locations/crookston/">https://larl.org/locations/crookston/</a>	
<b>East Grand Forks</b>	<b>Campbell Public Library</b>	218-773-9121	Contact for information
		<a href="http://www.egf.mn/185/Library">http://www.egf.mn/185/Library</a>	
<b>Fertile</b>	<b>Fertile Public Library</b>	218-945-6137	Contact for information
	<a href="mailto:fertile@larl.org">fertile@larl.org</a>	<a href="https://larl.org/locations/fertile/">https://larl.org/locations/fertile/</a>	
<b>Fosston</b>	<b>Fosston Public Library, Arts Center and Theatre</b>	218-435-1320	Contact for information
	<a href="mailto:fosston@larl.org">fosston@larl.org</a>	<a href="https://larl.org/locations/fosston/">https://larl.org/locations/fosston/</a>	
<b>Greenbush</b>	<b>Greenbush Public Library</b>	218-782-2218	Contact for information
	<a href="mailto:greenbush@nwrlib.org">greenbush@nwrlib.org</a>	<a href="https://nwrlib.org/libraries/greenbush">https://nwrlib.org/libraries/greenbush</a>	
<b>Grygla</b>	<b>Grygla Link Library</b>	218-294-6612	Contact for information
	<a href="mailto:grygla@nwrlib.org">grygla@nwrlib.org</a>	<a href="https://nwrlib.org/libraries/grygla">https://nwrlib.org/libraries/grygla</a>	
<b>Hallock</b>	<b>Hallock Public Library</b>	218-843-2401	Contact for information
	<a href="mailto:hallock@nwrlib.org">hallock@nwrlib.org</a>	<a href="https://nwrlib.org/libraries/hallock">https://nwrlib.org/libraries/hallock</a>	
<b>Halstad</b>	<b>Halstad LINK Library</b>	218-456-2162	Contact for information
	<a href="mailto:halstad@larl.org">halstad@larl.org</a>	<a href="https://larl.org/locations/halstad/">https://larl.org/locations/halstad/</a>	
<b>Hendrum</b>	<b>Hendrum Library</b>	218-861-6028	Contact for information
	<a href="mailto:hendrum@larl.org">hendrum@larl.org</a>	<a href="https://larl.org/locations/hendrum/">https://larl.org/locations/hendrum/</a>	
<b>Karlstad</b>	<b>Karlstad Public Library</b>	218-436-7323	Contact for information
	<a href="mailto:karlstad@nwrlib.org">karlstad@nwrlib.org</a>	<a href="https://nwrlib.org/libraries/karlstad">https://nwrlib.org/libraries/karlstad</a>	
<b>McIntosh</b>	<b>McIntosh Public Library</b>	218-563-4555	Contact for information
	<a href="mailto:mcintosh@larl.org">mcintosh@larl.org</a>	<a href="https://larl.org/locations/mcintosh/">https://larl.org/locations/mcintosh/</a>	
<b>Red Lake Falls</b>	<b>Red Lake Falls Public Library</b>	218-253-2992	Contact for information
	<a href="mailto:redlake@nwrlib.org">redlake@nwrlib.org</a>	<a href="https://nwrlib.org/libraries/red-lake-falls">https://nwrlib.org/libraries/red-lake-falls</a>	
<b>Roseau</b>	<b>Roseau Public Library</b>	218-463-2825	Contact for information
	<a href="mailto:roseau@suite.nwrlib.org">roseau@suite.nwrlib.org</a>	<a href="https://nwrlib.org/libraries/roseau">https://nwrlib.org/libraries/roseau</a>	
<b>Thief River Falls</b>	<b>Thief River Falls Public Library</b>	218-681-4325	Contact for information
	<a href="mailto:trfcirc@suite.nwrlib.org">trfcirc@suite.nwrlib.org</a>	<a href="https://nwrlib.org/libraries/thief-river-falls">https://nwrlib.org/libraries/thief-river-falls</a>	
<b>Twin Valley</b>	<b>Twin Valley LINK Library</b>	218-584-8355	Contact for information
	<a href="mailto:twinvalley@larl.org">twinvalley@larl.org</a>	<a href="http://larl.org/locations/twin-valley/">http://larl.org/locations/twin-valley/</a>	
<b>Warren</b>	<b>Godel Memorial Library</b>	218-745-5465	Contact for information
	<a href="mailto:warren@nwrl.org">warren@nwrl.org</a>	<a href="https://nwrlib.org/libraries/godel-memorial-warren">https://nwrlib.org/libraries/godel-memorial-warren</a>	
<b>Warroad</b>	<b>Warroad Public Library</b>	218-386-1283	Contact for information
	<a href="mailto:warroad@nwrlib.org">warroad@nwrlib.org</a>	<a href="https://nwrlib.org/libraries/warroad">https://nwrlib.org/libraries/warroad</a>	



## Area Attractions

### Bed 'n' Breakfasts

<b>Fosston</b>	<b>Amanda House Bed &amp; Breakfast</b> 203 3rd St NE 218-435-1523
----------------	--

<b>Hallock</b>	<b>Scandinavia Airnb</b> 28 2nd St SE 218-843-2813
----------------	--

This Airbnb space is an entire apartment, about 1,300 sq feet, on the upper level of an historic bank and jewelry store building. The ground level is a creative coffee shop (think pour over coffee and espresso drinks) that serves light breakfasts and lunches. The apartment has much of the character of the original 100 year old building, but with modern upgrades and can house 7 people.

### Restaurants

<b>Ada</b>	<b>Ada Subway</b> 16 E Main St. 218-784-7827
------------	--

Subs, salads, and wraps

<b>Ada</b>	<b>Lana Jo's</b> 106 E 4th Ave. 218-784-2665
------------	--

<b>Ada</b>	<b>Outpost Drive In</b> 901 E Thorpe Ave. 218-784-4102
------------	--

\* Seasonal

Burgers, chicken, ice cream, and more

<b>Ada</b>	<b>Pub 21</b> 107 4th Ave. West 218-784-3252
------------	--

<https://www.facebook.com/Pub21Ada/>

Enjoy a selection of microbrews and craft beers. A first class menu in a 100 year old setting! Come join us for daily specials.

<b>Ada</b>	<b>The Outpost Drive In</b> 901 E Thorpe Ave 218-784-4102
------------	---

Burgers, Chicken, Ice cream

<b>Ada</b>	<b>West Main Pizza</b> 301 W Main St. 218-784-3700
------------	--

Pizza, soup, and sandwiches

<b>Argyle</b>	<b>The Dell Steakhouse &amp; Lounge</b> 115 East 4th St. 218-437-8232
---------------	---

Excellent food with daily specials.

<b>Badger</b>	<b>Twins Corner Café</b> 101 Main St. 218-528-4824
---------------	--

Try homemade pies in a fun 50's atmosphere

<b>Beltrami</b>	<b>Beltrami Mall Café</b> 218-926-5525
-----------------	---

<b>Borup</b>	<b>AJ's Bar &amp; Grill</b> 210 Main Ave 218-582-3323
--------------	---

Main St.  
Short orders & pizza

<b>Brooks</b>	<b>Carol's Cozy Bar &amp; Grill</b> 318 Main St. 218-689-4608
---------------	---

<b>Climax</b>	<b>The Corner Bar and Café</b> 101 W Broadway St. 218-857-3525
---------------	--

<b>Crookston</b>	<b>Caribou Coffee</b> 1310 University Ave.
------------------	---

Inside Hugo's Grocery Store

<b>Crookston</b>	<b>Caribou Coffee</b> 2900 University Avenue
------------------	---

UMN Campus (Sahlstrom Center)

<b>Crookston</b>	<b>China Moon</b> 114 S. Broadway 218-281-3136
------------------	--

Chinese cuisine. Buffet. Eat in or take out.

<b>Crookston</b>	<b>Dairy Queen</b> 2700 University Ave. 218-281-4421
------------------	--

[www.dairyqueen.com](http://www.dairyqueen.com)

<b>Crookston</b>	<b>DaRoos</b> 101 West 2nd St 218-281-5000
------------------	--

Pizza, Mexican, and Subs for Dine In, Pick up, or Delivery

<b>Crookston</b>	<b>Domino's</b> 601 N. Broadway 218-281-3671
------------------	--

[www.dominos.com](http://www.dominos.com)

<b>Crookston</b>	<b>Drafts Sports Bar &amp; Grill</b> 925 Fisher Ave.
------------------	---

[www.draftssportsbar.com](http://www.draftssportsbar.com)

<b>Crookston</b>	<b>El Gordito Market</b> 212 N Broadway 218-281-1099
------------------	--

Homemade Mexican food at their new lunch counter.

<b>Crookston</b>	<b>Erbert's &amp; Gerbert's</b> 2900 University Ave.
------------------	---

UMN Campus (Sahlstrom Center)

## Area Attractions

---

### Crookston

#### Happy Joe's Pizza

705 E Robert St.  
218-281-5141

<https://www.happyjoes.com/>

---

### Crookston

#### Hong's Chinese Restaurant

2215 Sahlstrom Dr.  
218-281-3318

Daily lunch & dinner buffet or menu.

---

### Crookston

#### Irishman's Shanty

1501 S. Main  
218-281-9912

Restaurant and bar serving breakfast, lunch, and dinner.

---

### Crookston

#### McDonalds

1811 University Ave.  
218-281-7611

[www.mcdonalds.com](http://www.mcdonalds.com)

---

### Crookston

#### Mugoo's Pizza

Mugoo's Pizza  
1500 University Ave  
218-281-3130

---

### Crookston

#### RBJ's

1601 University Ave.  
218-281-3636 or 888-711-3636

[rbjsjam@rrv.net](mailto:rbjsjam@rrv.net)

[www.spreadablefruit.com](http://www.spreadablefruit.com)

Take home some of RBJ's jams and jellies for a sweet treat!

---

### Crookston

#### Scobey's Pub & Grub

2200 University Ave  
218-470-1000

A go-to for award-winner ribs, great lunch and dinner menu served in dining room or lounge. Large banquet room great for meetings, receptions, and weddings.

---

### Crookston

#### Subway

123 W 6th St.  
218-281-7470

[www.subway.com](http://www.subway.com)

---

### Crookston

#### Synergy

122 W Fletcher St  
218-289-1788

Enjoy healthy tasty meal replacement shakes and other delights.

---

### Crookston

#### Taco John's

605 N. Main  
218-281-7357

[www.tacojohns.com](http://www.tacojohns.com)

---

### Crookston

#### Wonderful Life Foods

115 N Main St  
218-247-1234

Gluten free restaurant and bakery.

---

### East Grand Forks

#### American Legion Post #157

1009 Central Ave NW  
218-773-1129

---

### East Grand Forks

#### Blue Moose Bar & Grill

507 2nd St NW  
218-773-6516

On the boardwalk in downtown EGF.

---

### East Grand Forks

#### Boardwalk Bar & Grill

415 2nd St. NW  
218-399-3000

A fun little spot serving up great burgers, sandwiches, appetizers and more right in the heart of downtown East Grand Forks.

---

### East Grand Forks

#### Burger King

926 Central Ave. NE  
218-773-4212

[www.burgerking.com](http://www.burgerking.com)

---

### East Grand Forks

#### Caribou Coffee

306 14th St E, Inside Hugo's  
218-773-2418

<http://www.gohugos.com>

Regular and specialty coffees

---

### East Grand Forks

#### Casa Mexico Restaurant

112 14th St NE  
218-773-4331

Authentic Mexican Food

---

### East Grand Forks

#### Dairy Queen

218-773-7602

[www.dairyqueen.com](http://www.dairyqueen.com)

Hwy 220 N

---

### East Grand Forks

#### Little Bangkok

415 2nd St NW  
218-399-1122

<https://www.littlebangkok.net/>

Thai cuisine and sushi

---

### East Grand Forks

#### Luigi's Pizza

122 4th St. NE  
218-773-3036

---

### East Grand Forks

#### Mamma Maria's Italian Restaurant & Pizzeria

211 DeMers Ave.  
218-773-2225

Located in the Riverwalk Centre

Featuring a southern italian menu that includes ravioli, lasagna, veal marsala, chicken parmigiana & pizza.

---

### East Grand Forks

#### McDonalds

1212 Central Ave. NE  
218-773-3922

[www.mcdonalds.com](http://www.mcdonalds.com)

---

### East Grand Forks

#### Mike's Pizza

411 2nd St. NW  
218-773-2479

## Area Attractions

### East Grand Forks

### Red Pepper East

1504 Central Ave. NE  
218-773-6344

Hwy. 220 N, near the technical college  
Mexican/American food. Come try a specialty grinder!

### East Grand Forks

### Sickie's Garage Burgers & Brews

121 Demers Ave  
218-399-2006

Sickies Garage Burgers & Brews is a North Dakota grown, award-winning restaurant offering a wild variety of freshly made extreme burger creations and craft beer pairings. Founded during 2012 in Fargo, ND, Sickies Garage now has 5 locations across North Dakota, South Dakota, and Minnesota.

Open 7 days a week. Sickies Garage – 50 Burgers, 50 Brews & More.

### East Grand Forks

### Subway Sandwiches & Salads

201 Gateway Dr. NE  
218-773-6637

[www.subway.com](http://www.subway.com)

### East Grand Forks

### The Spud Jr. Public House

302 Demers Ave.  
218-399-0121

<https://www.thespudjr.com/>

With great food, refreshing drinks, and an inviting atmosphere, The Spud Jr. is the best spot in town. Stop by and check out The Spud Jr., where strangers become friends, and friends become family.

### East Grand Forks

### Up North Pizza Pub

314 4th St. NW  
218-399-0200

<http://www.upnorthpizzapub.com/>

Like all great ideas, Up North Pizza ironically started over pizza and beer. Friends coming together with a vision to create an appetizing atmosphere of great food, cold drinks and friendly conversation. Years later, Up North Pizza opened it's doors in East Grand Forks offering pizza, Italian dishes, microbrews, and a family atmosphere. We're excited to share in the love of tasteful food, cold brews and memorable gatherings.

### Erskine

### Hot Stuff Pizza

22848 347th St  
218-687-4444

Comfort food-quick bite-Casual, offering Pizza, Breakfast sandwiches, burgers, quesadillas and a variety of snacks and appetizers

### Erskine

### Joe DiMaggio's Grill & Pizza

22594 347th St.  
218-687-2100

### Erskine

### Ness Café

526 Vance Ave.  
218-687-2101

Banquet facilities, specials daily, serving breakfast all day.

### Erskine

### Parenteau's Off-da Tacos

218-686-2297

Mobile food concession stand. Check out the schedule at <http://oofdatacos.com/>.

### Erskine

### The Deuce Bar & Grill

126 Vance Ave. S  
218-687-2500

### Fertile

### Erickson's Smokehouse

607 Mill St. S  
218-945-6806

Dine in, carry out, and catering

### Fertile

### Hot Stuff Pizza

101 S. Mill St.  
218-945-3333

Pizza, burgers, and subs.

### Fertile

### Mill St Café

217 Mill St N  
218-945-3130

Mill Street Cafe is a restaurant that serves home cooked breakfast and lunch in an environment that is welcoming for people of all ages in the community.

### Fertile

### Northside Express

702 N. Mill St.  
218-945-6161

Deli and grill food available, including broasted chicken, subs, pizza, and hamburgers.

### Fertile

### Side Street Bar and Grill

103 Lincoln Ave. NW  
218-945-6830

Burgers and Mexican cuisine!

### Fisher

### Cenex Store

Offering Teco Tacos as well as full menu with booths and tables for dining in and a picnic table outside.

### Flom

### Flom Café

Co-located with the Flom VFW  
Come try our home cooked meals

### Fosston

### A & W Drive-In

506 West 1st St.  
218-435-6999

\* Seasonal

Have a burger and a frosty mug of root beer at one of the few drive-in A & W's left in the area.

### Fosston

### Caribou Coffee

300 W 1st St  
218-435-1454

Located in Palubicki's Family Market. premium coffeeshouse featuring high quality, handcrafted beverages and food. At our Palubicki's location we serve expertly roasted coffee blends & espressos and our handcrafted beverages, such as mochas and lattes, are created using only the best ingredients.

### Fosston

### Dairy Queen

411 1st Ave E  
218-435-1095

### Fosston

### DaRoos Pizza

110 N Johnson Ave  
218-435-2002

## Area Attractions

### Fosston

#### Maple Ridge Café

105 N Johnson Ave  
218-435-2202

Variety of homecooked American meals

### Fosston

#### Subway

511 1st St W  
218-435-6676

### Fosston

#### The Filling Station at LePier's

320 E 1st St  
218-435-1040

Dine in or take out. Wide Variety of Pizza, Salad Bar, Subs, Tacos etc.

### Fosston

#### Ventures Bar and Grill

104 Amber Ave S  
218-435-1171

### Foston

#### Bistro 300

300 1st St W  
218-435-1454

Apps, Burgers, Breakfast Everyday, Pitchfork Gourmet Pizza, Salads, Sandwiches and Beer. Happy Hour Thurs & Fri 4 - 6. Inside Palubicki's family Market

### Gary

#### Gary Café

99 Thorpe St.  
218-356-8750

Home cooked meals. Serve Breakfast and Lunch.

### Goodridge

#### Countryside Grill

22763 260th Ave NE  
218-378-4702

Full Menu

### Goodridge

#### Goodridge Liquor Store

305 Vaughan St. E  
218-378-4113

Open 6 days a week with daily specials.

### Greenbush

#### American Legion Northern Grill

264 Main St N

Open every Wednesday, Thursday, & Friday Nights at 5:00 pm

### Greenbush

#### Remedies Bar & Grill

183 Main St N  
218-782-2393

### Greenbush

#### Twins Rockin 50's Café

163 Main St.  
218-782-5791

Marvelous 50's motif décor.

### Grygla

#### Diamond 4J's

125 N Main Ave  
218-294-6610

### Grygla

#### Grain Bin Café & Gift Shop

126 North Main Ave.  
218-294-6306

### Grygla

#### Yo-Hawn's Bar & Grill

411 W. State St.  
218-294-6197

### Gully

#### Gully Café

301 Main St. S.  
218-268-4570

Location: School House Mall

Good home cooking. Special Sunday menu. On Pine to Prairie Birding Trail. Also, a snowmobile trail goes all four directions from Gully which is maintained by Clearwater Trailblazers.

### Gully

#### Shorty's Place Bar & Grill

218-268-4199

Bingo - Saturday's at 6 PM

### Hallock

#### Bean and Brush

28 2nd St SE  
218-853-2857

Downtown Hallock

New gourmet coffee shop offering specialty drinks and lunches.

### Hallock

#### Hallock Eagles Club

418 S Atlantic Ave  
2188433493

A Hallock institution. Bar & grill serving appetizers, wraps and burgers. Friday fish fry during Lent

### Hallock

#### Last Chance Trading Post

28 2nd St SE  
218-853-2003

Wine bar, gourmet foods, cheese, charcuterie, crackers, jams, pasta, olive oil, Sriracha aioli and salad dressing and Scottish Highland Beef.

### Hallock

#### Shamrock Lanes and Grill

Hwy 75 N.

Contact: Becky Vagle

218-843-8868

Bowling Alley with dining options and lunch specials.

### Halma

#### The Frog Pond

203 Main Street  
218-265-3764

Restaurant and lounge featuring daily lunch specials and takeout.

### Halstad

#### Cenex C-Store

7 E 3rd St  
218-456-2176

Hwy 200 & 75

Muffins, pizza, subs, and ice cream

### Hendrum

#### Nepstad Oil Co.

P.O. Box 160  
218-861-6241

<http://www.nepstadoil.com/>

135 Hwy 75 N.

Deli - chicken, pizza, sub sandwiches, soft-serve ice cream, malts, & more. Take-out service. Groceries, fuel, LP for gas grills, movie rentals, etc. Also, fishing, big game, and small game licenses are available for purchase.



## Area Attractions

### Hendrum

### Tank's Barley House

303 Main St.E  
218-861-5500

A relaxed, inviting atmosphere with awesome music, fun board games, Great North Pizza and (most importantly) tasty craft beer on tap!

### Karlstad

### American Legion Post #445

218-436-2999

Open Monday-Saturday with lunch specials, and menu for dine-in or take out.

### Karlstad

### Karlstad Korner

101 Main St  
218-436-2560

Gas, Food, and Snacks, Hot Stuff Pizza

### Karlstad

### Nordhem Restaurant & Heritage Center

206 Main St S  
218-436-2000

Location: Downtown Karlstad  
Scandanavian Foods

### Kennedy

### Café 75

518 Atlantic Ave  
218-674-4500

Serving hotdish, homemade soups and daily specials

### Lake Bronson

### American Legion Post #315

218-754-2525

Open daily. Menu for dine-in or take out.

### Lake Bronson

### Maverick Bar & Lounge

218-754-4645

### Lancaster

### Foxy Roxy's Diner

123 Central Ave. S.  
218-762-1799

Downtown Lancaster

### Lengby

### The Clinic Bar and Grill

102 2nd St S  
218-668-2688

Full Service Menu including steak and lobster, chicken, ribs as well as burgers and soup.

### Lengby

### The Ruffed Grouse Roadhouse

1337 300th Ave  
218-668-2111

Native American Casino with great full service menu

### McIntosh

### Little Bobby's Bar & Grill

295 Cleveland Ave. SW  
218-563-9928

Burgers and Fries. Bar Menu

### Mentor

### Dairy Queen

38 County Rd. 12 N  
218-637-2215

www.dairyqueen.com

### Mentor

### Lakeview Resort Restaurant & Lounge

16233 340th St. SE  
218-637-6237

On Maple Lake, 3 mi. E of Hwy 2 on Co. Rd 10.

### Mentor

### Mentor Café

212 Garfield Ave. N  
218-637-6150

### Mentor

### Mentor Municipal Liquor Store

201 Garfield Ave N  
218-637-6912

Pizza

### Mentor

### Rhombus Pizza

110 Garfield Ave  
218-637-2198

<http://rhombuspizza.com>

Open seasonally, starting around the middle of May. Pizza, ribs, burgers, and sandwiches. "Don't be a square...eat at the Rhombus!"

### Middle River

### The Garden Café

130 Hill Ave. S  
218-222-3763

Variety of homecooked American fair

### Middle River

### The Wheel Bar and Grill

115 Hill Ave  
218-222-3512

Intersection of Hwy. 32 and Hill Ave.

### Newfolden

### Hobo Haus Bar & Grill

218-874-8111

One block west of Hwy 59

Try the huge Hobo Burger on an onion bun!

### Newfolden

### Newfolden Café

101 Main St N  
218-874-8361

### Oklee

### Oklee Café

301 Main St.  
218-796-5666

Home cooked meals

### Oklee

### TJ's Tavern

209 Main St.  
(218) 796-5153

Offers daily specials, scheduled live music, homemade pizzas, sandwiches, seafood, Tex-Mex, and Italian. "The little kitchen that could"

### Oslo

### Kitty's Café

205 Main St.  
218-695-0924

### Plummer

### The Post Restaurant and Lounge

(218) 465-4384

Plummer American Legion. Friday and Saturday night specials.

## Area Attractions

### Red Lake Falls

### Joe Dimaggio's Sports Café

Park Place Mall  
218-253-2929

Sports memorabilia on walls. Take out orders welcome and pizza menu.

### Red Lake Falls

### Memories Café

Main Street  
218-253-4222

Located in the new Cenex Building on Hwy 32  
50-60-70 Decades. Home cooking, catering, & take out orders.

### Red Lake Falls

### The Spot Bar & Grill

604 Broadway Ave. NE  
218-253-2888

Daily specials plus drinks.

### Roosevelt

### Arneson's Rock Harbor Lodge

6760 Rocky Point Rd NW  
218-442-7215

Rock Harbor Lodge at Arneson's Rocky Point offers guests and visitors lakeside dining with spectacular views of Lake of the Woods. You'll enjoy a quality dining experience where the sunsets and food are second to none.

### Roosevelt

### Bella's Café

218-442-6021

On Highway 11  
Cozy country dining room

### Roosevelt

### Roosevelt Rustic Café

31405 Co Rd 17  
218-442-6021

American cuisine. Salads, Sandwiches

### Roosevelt

### The Hawk Bar & Grill

218-442-2470

9769 Hwy 11

Bar and grill geared towards outdoor enthusiasts. Featuring the Hawk's Nest, a huge building that host parties, weddings and special events. The Hawks Nest is open spring, summer, & fall and closed in the winter.

### Roseau

### Bear and Bean Coffee

### Company

114 3rd ST NW  
218-463-3333

Specialty Coffees and variety of lunches including Breakfast Sandwiches, Bagels, Scones, Paninis, wraps and salads.

### Roseau

### Brickhouse Bar & Grille

205 5th Ave, Ste 3  
218-463-0993

A unique setting in a restored creamery building, historic photo displays of Roseau County. Steaks, seafood, and burgers. Meeting room available.

### Roseau

### Earl's Drive-In

1001 3rd St. NE  
218-463-1912

\* Seasonal

Great tasting short order food, including chicken, fries, burgers, sodas, and malts.

### Roseau

### Gene's Bar & Grill

1095 NW 3rd  
218-463-1957

Cocktails and food

### Roseau

### Guest House Eatery & Pub

216 Main Ave. N  
218-463-2542

Dining at it's best, made from scratch from family recipes! Menu includes Gluten-free options and a Prime Rib Special on Friday & Saturday Nights. Open Tuesday - Saturday from 6:30 am to 10 pm, Sundays & Mondays 6:30 am to 3 pm

### Roseau

### Hot Stuff Pizza

503 3rd St NW  
218-463-0225

Located in the Holiday Store  
Take out only.

### Roseau

### Jake's Pizza

114 Main Ave. N  
218-463-3349

Serving pizza and sandwiches. Take out available.

### Roseau

### Kate's Kitchen

202 4th Ave NW  
218-242-5078

kateskitchenmn@hotmail.com

You can enjoy the delicious BBQ from their custom Drive-Thru or through one of our corporate or private catering events.

### Roseau

### Legends Sports Pub and Grill

117 S Main St  
218-463-2641

A clean place with a cool vibe and great pizza and burgers!

### Roseau

### Nelson's Café

104 Main Ave.  
218-463-2277

Home style cooking with daily specials

### Roseau

### Pizza Hut Express

218-463-1626

www.pizzahut.com  
Corner of Hwy 1 & 89

### Roseau

### Roseau Dairy Queen

218-463-3030

www.dairyqueen.com  
State Hwy 11

### Roseau

### Roseau Diner

318 Westside  
218-463-2036

Hwy 11 W

Daily specials, lunch/Sunday brunch buffet, and full bar & lounge. Inside the Roseau Motel.

### Roseau

### Silver Dragon

100 Main Ave. N.  
218-463-3848

Chinese cuisine. Eat in or take out.

## Area Attractions

### Roseau

www.subway.com  
Highway 11 W

### Subway

218-463-2677

### Roseau

### The Pour House Bar and Grill

206 Main Ave N  
218-463-1218

Homestyle Lunch

### St. Hilaire

### Broadway Station Bar & Grill

215 S. Broadway Ave N  
218-964-5220

6 miles S. of Thief River Falls on Hwy. 32  
Bar and grill, includes off-sale.

### Stephen

### Northern Lights Lounge

US-75  
218-478-3580

Bar Menu

### Stephen

### Roadside Grill

677 Hwy 75 W  
218-480-2237

### Strandquist

### Rainbow Club

102 Rainbow Dr.  
218-597-2397

Dining and a full service bar

### Strathcona

### Paradise Café

109 S 1st St  
218-781-2885

on Highway 32

Paradise is a small cafe, convenience store, and gas station located in the small town of Strathcona, MN. We are located right off of Highway 32.  
Try the pie - ala mode!

### Thief River Falls

### A&W All American Food

1930 Frontage Rd  
218-681-7482

Fast Food outlet serving up namesake root beer and floats, plus burgers, chicken, hotdogs and fries.

### Thief River Falls

### Arby's

225 3rd St. W  
218-681-2432

### Thief River Falls

### Biff's Kitchen

811 Atlantic Ave. N  
218-681-9907

Large menu that includes sandwiches, dinners, homemade fresh baked pies, and breakfast (served all day).

### Thief River Falls

### Black Cat Sports Bar & Grill

1080 Hwy 32 S  
218-681-8910

<http://www.blackcattrf.com/>

Snowmobile memorabilia on walls. Bar and grill. Meeting/party room available in basement.

### Thief River Falls

### Caribou

215 pennington Ave S  
218-681-8555

Eco-conscious coffee chain offering java drinks, smoothies & teas alongside light fare and pastries.

### Thief River Falls

### Cenex Hwy 59 Travel Plaza

1930 Hwy 59 SE  
218-681-7441

### Thief River Falls

### Champs Chicken

1930 Hwy 59 SE  
218-681-7441

Fast Food Fried Chicken and Shrimp, with a large variety of sides to choose from.

### Thief River Falls

### China King

304 3rd St. E  
218-681-3858

Chinese cuisine. Eat in or take out.

### Thief River Falls

### Dairy Queen

517 Duluth Ave. S  
218-681-3007

www.dairyqueen.com

Daily specials, healthy salads, and cakes for all occasions.

### Thief River Falls

### Domino's

209 N. Brooks Ave.  
218-681-6000

www.dominos.com

You tell us what you want and we'll take care of the rest!

### Thief River Falls

### Eagles Club

305 Red Lake Boulevard  
218-681-2406

### Thief River Falls

### Evergreen Catering and Bakery

1302 Greenwood St W  
218-683-5000

### Thief River Falls

### Jeff's Kitchen

324 Brooks Ave. N  
218-681-7034

Location: In the American Legion

### Thief River Falls

### Johnnie's Café & Patzy's

### Catering

304 Main Ave. N  
218-681-0436

Small and friendly café with home style cooking

### Thief River Falls

### Las Ranitas

1845 Hwy 59 S  
218-681-0644

Authentic fresh made Mexican food in a festive, colorful atmosphere. We have a NEW menu of traditional platters, desserts, and margaritas at a great price. Come and enjoy a little piece of Mexico. Open seven days a week! Dine-in and carry-out.

## Area Attractions

---

### Thief River Falls

### McDonalds

1547 US Hwy 59 S  
218-681-6770

[www.mcdonalds.com](http://www.mcdonalds.com)

---

### Thief River Falls

### Papa Murphys Take and Bake Pizza

1845 US 59 #500  
218-683-5129

Chain outlet offering build your own takeaway pizzas to be cooked at home. They also offer gluten free pizzas as well as vegetarian options.

---

### Thief River Falls

### Pizza Hut

1809 US Hwy 59 SE  
218-681-1306

[www.pizzahut.com](http://www.pizzahut.com)

---

### Thief River Falls

### River Road Café

located at the Seven Clan's Casino  
218-681-4062

Featuring breakfast, lunch, and dinner buffets as well as a dining menu.

---

### Thief River Falls

### River Walk Public House

700 Hwy 32 S  
218-681-3138

Fine dining with a casual flair. Featuring happy hour specials, patio dining, and a variety of menu options.

---

### Thief River Falls

### Rusty Nail Bar & Grill

303 Main Ave. N  
218-681-6245

---

### Thief River Falls

### South China Buffet

123 West 3rd St.  
218-681-8880

Szechuan, Cantonese, & Hunan cuisine. Buffet, catering, and take-out available.

---

### Thief River Falls

### Subway

[www.subway.com](http://www.subway.com)

2 locations in Thief River Falls: One at 1755 US HWY 59 SE (218-681-7359) and one at 201 3rd St. W (218-681-5236).

---

### Thief River Falls

### Sundance Dining

1060 Hwy 32 S  
218-681-7555

Hwy 32 S, located in the Quality Inn

Full bar, dinner menu, and a fun atmosphere.

---

### Thief River Falls

### Taco John's

122 3rd St. W  
218-681-5987

[www.tacjohns.com](http://www.tacjohns.com)

---

### Thief River Falls

### The Hive Bar & Grill

1582 Hwy 59 SE  
218-683-5389

Serving fresh American cuisine seven days a week. Great food and great service, combined with a cool atmosphere makes The Hive the place to 'Bee'.

---

### Thief River Falls

### The Puck on Third

203 3rd St W  
218-683-5187

Serves breakfast, lunch, and dinner

Catering

Good For Groups

Good For Kids

Take Out

Walk-Ins Welcome

---

### Thief River Falls

### The Schooner Bar & Grill

212 2nd St. E  
218-681-4500

---

### Thief River Falls

### Wired Bean

1554 Highway 59 S, Suite 100  
218-683-5112

<https://www.wiredbeanmn.com/>

Where friends come to meet in Thief River Falls! Terrific locally-roasted coffees, lattes, mochas, teas, smoothies, Italian sodas, soup, sandwiches, and pastries. Free Wi-Fi.

---

### Twin Valley

### Gerry's Foods

106 1st St.  
218-584-5179

Deli food, broasted chicken, and daily specials.

---

### Twin Valley

### Twin Valley Liquor Store

3773 Co. Hwy 27  
218-584-5262

On/Off Sale Municipal. Serves a variety of foods including pizza, sandwiches and appetizers. Sit down tables, back room seating, or To-Go. Menu available online at [www.TwinValley.GovOffice.com](http://www.TwinValley.GovOffice.com).

---

### Viking

### Viking Diner

105 S. Main St.  
218-523-6082

---

### Wannaska

### Café 89

39990 181st St.  
218-425-4089

---

### Warren

### 175 Corner Store

315 N. Main St.  
218-745-5104

Subs, pizza, and tacos.

---

### Warren

### Mick's

205 E Nelson Ave.  
218-745-4546

Have a burger and your favorite beverage.

---

### Warren

### Solid Rock Nutrition

113 W Johnson Ave  
701-740-5256

Nutritious shakes and teas

---

### Warren

### Uptown Café

510 N. Main St.  
218-745-7636

Large banquet room and fine dining.



## Area Attractions

**Warren** **Warren American Legion**  
424 N 1st St  
218-745-5201

Serving Full restaurant menu every Friday night as well as Bar Menu.

**Warren** **Warren Dairy Queen**  
218-745-4209

www.dairyqueen.com

\* Seasonal

**Warroad** **Algoma Eatery & Tavern**  
318 Lake St.  
218-386-4044

**Warroad** **American Legion Club**  
410 E Lake St  
218-386-1625

Dining room open Sunday through Saturday evenings. Available for private parties and dances.

**Warroad** **Bec's Drive In**  
608 Emily Ave NW  
218-386-3400

Friendly service, good burgers, tasty ice cream, and cold beverages. Seasonal.

**Warroad** **Cenex Farmers Union Oil Co. Gourmet Café**  
418 State St  
218-386-1318

You can custom order your breakfast, lunch or dinner; it will be given to you hot and fresh in a brown bag so you can sit down in our comfy seating area... or take it with you on the road, to work or home.

**Warroad** **Daisy Garden Restaurant**  
Re-opening Soon  
Oriental and American cuisine with a daily lunch special.

**Warroad** **Doug's Supermarket Deli**  
310 Main Ave. NE  
218-386-1246

doug@dougssupermarket.com

http://www.dougssupermarket.com/

Full service supermarket with an in-store sit down deli as well as a bakery.

**Warroad** **Hot Stuff Foods**  
203 N State St  
218-386-3201

Holiday always has fast, friendly service along with a variety of hot and cold sandwiches, fresh coffee, tasty milk shakes, and smoothies. Our Hot Stuff Foods offer pizzas, breadsticks, burgers, and much more! Made fresh always.

**Warroad** **Izzy's Lounge & Grill**  
801 State Ave. N  
218-386-2723

http://patchmotel.com/lounge-grill/

Features a lounge area and a family-friendly grill area that offers games and television. Home of the "Best Burger in Town." The floor to ceiling fieldstone fireplace is a major focal point, along with deer and caribou mounts. Karaoke is available Friday and Saturday nights.

**Warroad** **Nomad Tavern**  
1109 Mackenzie St NE  
218-386-4808

Warroad's premiere pizzeria and bar located on the shores of Lake of the Woods. Bring your family, friends, or team and enjoy the food, beverages, and view

**Warroad** **Subway**  
901 State Ave. N  
218-386-2680

www.subway.com

**Warroad** **The Phoenix Restaurant And Lounge**  
603 Cedar Ave NW  
218-386-1618

Traditional Menu of Burgers, Pastas, Dinners, & Pizza.  
Dine in, carry out, & delivery.

**Warroad** **The Willows**  
34966 605th Ave  
218-386-3381

Fine dining at its very best as you enjoy a breathtaking view of Lake of the Woods. In addition to the delicious food, The Willows will offer daily and nightly specials as well as Prime Rib every Saturday. Top off your night with an amazing cup of coffee and gourmet dessert, and you'll want to come back again and again!  
Open for Breakfast, Lunch, and Dinner  
Daily 7:00 a.m. to 9:00 p.m.

**Warroad** **Warroad Dairy Queen & Brazier**  
609 Cedar Ave. NW  
218-386-2187

www.dairyqueen.com

**Warroad** **Warroad Estates**  
Warroad Estates Golf Course, 37293 Elm Dr  
218-386-2025

Bar and restaurant with indoor and outdoor dining.  
The Clubhouse offers a full bar daily, weekday concessions, and serving a variety of burgers, sandwiches, and pizzas. Relax inside or enjoy our sunny patio overlooking the Minnesota-shaped 9th green. The Clubhouse is available for private parties and small banquets, and our reservation menu is available for bigger parties.

**Winger** **Moran's Supper Club & Lounge**  
218 N. Borud St.  
218-938-4151

## Tourist Information

---

### Explore Minnesota

218-681-0997

[www.exploreminnesota.com](http://www.exploreminnesota.com)

---

### Minnesota Department of Natural Resources

<http://www.dnr.state.mn.us>

Natural resource and outdoor recreation information for the state of Minnesota.

---

### Riverland

<http://visitriverland.org>

Riverland is a regional tourism organization that is comprised of seven communities in Northwest Minnesota – Crookston, East Grand Forks, Fertile, Red Lake Falls, St. Hilaire & Thief River Falls.

---

### Tour Kittson County

<http://tourkittsoncounty.com/>

Tourist information site for Kittson County, MN.

---

### Ada Chamber of Commerce

315 West Main St.

218-784-3542

<https://www.adamchamber.com/>

Located at Office Supplies Plus

---

### Ada City Hall

PO Box 32

218-784-5520

<http://www.adamn.gov/>

404 W Main St.

---

### Alvarado City Office

PO Box 935

218-965-4911

155 Marshall St.

---

### Argyle City Office

PO Box 288

218-437-6621

[www.ci.argyle.mn.us](http://www.ci.argyle.mn.us)

---

### Badger City Office

111 North Main St.

218-528-3670

<http://www.badgermn.com>

---

### Borup City Hall

PO Box 4

218-582-3238

---

### Brooks City Office

PO Box 98

218-698-4220

[bfcu@gvtel.com](mailto:bfcu@gvtel.com)

---

### Crookston Area Chamber and Visitors Bureau

103 South Broadway

218-281-4320

[www.visitcrookston.com](http://www.visitcrookston.com)

Historic walking tour brochures available.

---

---

### The Chamber of Commerce

PO Box 315

701-772-7271

[www.gochamber.org](http://www.gochamber.org)

202 N 3rd St., Grand Forks, ND, 58203

Grand Forks and East Grand Forks have a combined Chamber of Commerce.

---

### Erskine City Office

PO Box 59

218-687-4646

[www.ci.erskine.mn.us](http://www.ci.erskine.mn.us)

105 Ross Ave.

---

### Fertile City Office

101 South Mill St.

218-945-3136

[lisa@cityoffertile.org](mailto:lisa@cityoffertile.org)

[www.cityoffertile.org](http://www.cityoffertile.org)

Location: Duane Knutson Community Center, 101 S. Mill St.

---

### Fisher Chamber of Commerce

PO Box 111

218-891-2126

[FisherChamberofCommerce@gmail.com](mailto:FisherChamberofCommerce@gmail.com)

---

### Fishers Landing Travel Information Center

218-773-7879

On Hwy. 2 between Fisher and East Grand Forks.

\* May- September

Fishers Landing is operated by Explore MN Tourism and has a comprehensive inventory of informational maps and brochures. The center specializes in vacations and recreation services available in Northern Minnesota, as well as information on the entire State of Minnesota.

---

### Fosston City Offices

220 E 1st St

218-435-1959

<http://www.fosston.com/>

In City Hall across from High School, 220 1st East

---

### Gary City Office

115 1st Ave.

218-356-8600

[citygary@arvig.net](mailto:citygary@arvig.net)

<http://www.garymn.com/>

115 1st Ave

---

### Goodridge City Office

305 Vaughn Main St. E

218-378-4113

---

### Greater Grand Forks Convention & Visitors Bureau

4251 Gateway Drive

800-866-4566

[info@visitgrandforks.com](mailto:info@visitgrandforks.com)

[www.visitgrandforks.com](http://www.visitgrandforks.com)

In Grand Forks, ND

---

### Greenbush City Hall

244 Main St. N

218-782-2570

<http://www.greenbushmn.govoffice2.com>

City Office/Community Center, 244 Main St. N

---

## Tourist Information

---

### Grygla City Office

219 West Beltrami St. 218-294-6292  
cityofgrygla@gvtel.com  
www.grygla.govoffice2.com  
Grygla Civic Bldg., 219 W. Beltrami

---

### Gully City Office

120 Main St 218-268-4591

---

### Hallock City Office

PO Box 336 218-843-2737  
http://www.hallockmn.org/  
163 S. 3rd St.  
Find us on Facebook

---

### Halma City Office

116 Minnesota Ave 218-265-2084

---

### Halma Community Center

Main St. 218-265-2084  
Dances, receptions, catering events, meetings etc.; call to  
schedule your event.

---

### Halstad City Offices

405 2nd Ave. West (PO Box 135)  
www.halstad.com

---

### Hendrum City Office

PO Box 100 218-861-6210  
http://hendrummn.com/  
308 Main St. E  
For information on the Hendrum Economic Development Authority  
(EDA), please contact the City Clerks Office.

---

### Humboldt City Office

Box 52 218-379-3153

---

### Karlstad City Office

PO Box 299 218-436-2178  
karlstadcity@wiktel.com  
http://cityofkarlstad.com/  
104 1st St. S

---

### Kennedy City Office

PO Box 7 218-674-4142  
www.cityofkennedy.com  
414 N. Atlantic

---

### Lake Bronson City Office

PO Box 70 218-754-2710  
lakebronson@wiktel.com  
www.cityoflakebronson.com  
112 East Main St.

---

### Lancaster City Office

PO Box 97 218-762-6472  
http://www.lancastermn.org/  
95 2nd St. West

---

### Lengby City Office

PO Box 55 218-668-2246

---

### McIntosh City Office

PO Box 97 218-563-3043  
macclerk@gvtel.com  
www.ci.mcintosh.mn.us  
115 Broadway NW

---

### Mentor City Clerks Office

PO Box 162 218-637-2911  
mentor@gvtel.com

---

### Middle River City Office

PO Box 57 218-222-3608  
http://middlerivermn.govoffice3.com/  
Spruce Valley Community Center, 250 Hill Ave.

---

### Nielsen City Hall

201 US Highway 75 N 218-946-3205

---

### Oklee City Office

PO Box 190 218-796-5183  
cityofoklee@gvtel.com

---

### Oslo City Hall

P.O. Box 187 218-695-3841  
107 3rd Ave. E.

---

### Perley City Office

Box 437 218-861-6170

---

### Plummer City Office

PO Box 128 218-465-4231  
cityplmr@gvtel.com

---

### Red Lake Falls City Office

PO Box 37 218-253-2684  
www.redlakefalls.com  
In the City Hall half block east of Main Ave. at 2nd St.  
The Center can provide information on activities available around  
the city including tubing, canoeing, camping, and special events.

---

### Roosevelt City Office

Po Box 103 218-442-2920

---

### Roseau City Office

121 Center St. E, Suite 102 218-463-0009  
rosoclrk@mncable.net  
http://www.city.roseau.mn.us/

# Tourist Information

---

## St. Hilaire City Office

PO Box 296 218-964-5257  
citysth@gvtel.com

---

## St. Vincent City Office

421 Pacific Ave. 218-823-6224

---

## Stephen City Office

413 5th St., Suite B 218-478-3614  
cityclerk@stephenmn.com  
www.stephenmn.com

---

## Strandquist City Office

PO Box 54 218-597-2037

---

## Strathcona City Office

PO Box 3 218-781-2242

---

## Thief River Falls Chamber of Commerce

102 Main Ave. N (218) 681-3720  
contact@trfchamber.com  
www.trfchamber.com

---

## Visit Thief River Falls

102 Main Ave. N 218-686-9785  
info@visitrfr.com  
www.visitrfr.com

---

## Twin Valley City Office

107 2nd St. SW 218-584-5254  
tvcity@tvutel.com  
www.twinvalley.govoffice.com

---

## Twin Valley Heritage, Art and Info Center

100 1st St. NE 218-584-5658  
On Hwy 32 in the center of town

---

## Viking City Office

108 Main St S / PO Box 97

---

## Warren City Hall

120 E. Bridge Ave 218-745-5343  
info@warrenminnesota.com  
www.warrenminnesota.com

---

## Warroad Chamber of Commerce

201 Lake St. NE, Suites G & E 218-386-3543 or 1-800-328-4455  
visitwarroad@gmail.com  
https://visitwarroad.com/

---

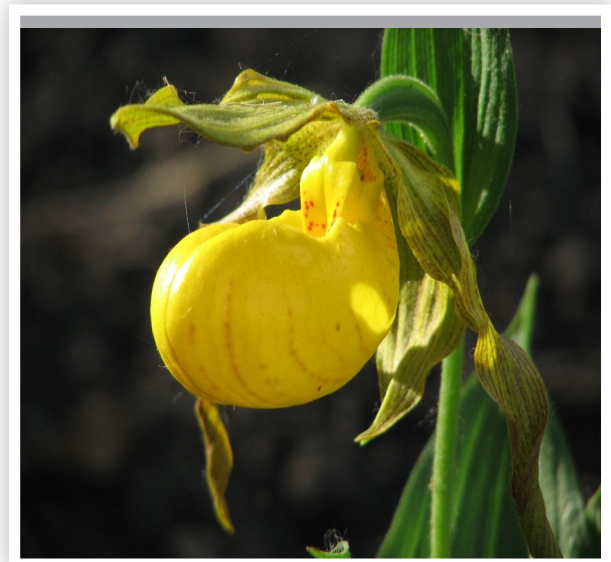
## Warroad City Hall

121 Main Ave. NE 218-386-1454  
warroad@mncable.net  
https://visitwarroad.com/  
Located in the old CN Depot on Main Ave.

---

## Winger City Office

PO Box 70 218-938-4150  
cityofwinger@gvtel.com  
http://www.visitwinger.com/







### Highway Route Trails

- Pine to Prairie Birding Trail
- Prairie Passage
- Red Lake River Canoe and Boat Trail
- Red River Canoe and Boat Trail
- Pembina Trail